

For Research Use Only

RIF1 Polyclonal antibody

Catalog Number: 30119-1-AP



Basic Information

Catalog Number: 30119-1-AP	GenBank Accession Number: NM_001177663.1	Purification Method: Antigen affinity purification
Size: 150ul , Concentration: 600 ug/ml by Nanodrop;	GeneID (NCBI): 55183	Recommended Dilutions: WB 1:1000-1:4000
Source: Rabbit	UNIPROT ID: Q5UIPO	IHC 1:400-1:1600
Isotype: IgG	Full Name: RAP1 interacting factor homolog (yeast)	IF/ICC 1:600-1:2400
Immunogen Catalog Number: AG32422	Calculated MW: 274 kDa	
	Observed MW: 300 kDa	

Applications

Tested Applications:
WB, IHC, IF/ICC, ELISA

Species Specificity:
Human, mouse

Note-IHC: suggested antigen retrieval with TE buffer pH 9.0; (*) Alternatively, antigen retrieval may be performed with citrate buffer pH 6.0

Positive Controls:

WB : A431 cells, HEK-293T cells, HT-29 cells, HeLa cells, HepG2 cells, MCF-7 cells

IHC : human cervical cancer tissue, mouse testis tissue

IF/ICC : HeLa cells, HEK-293 cells

Background Information

RIF1 (Rap1-interacting factor 1) is a multifunctional chromosome stability protein implicated in controlling DNA replication and repair. Human RIF1 can interact with protein phosphatase 1 (PP1) and the interaction is crucial for controlling DNA replication by limiting phosphorylation of the MCM complex (PMID: 28077461). RIF1 also acts with PP1 to protect nascent DNA from overdegradation at stalled replication forks (PMID: 31141682). RIF1 promotes non-homologous end joining (NHEJ) in double strand break (DSB) repair (PMID: 30443189). Research studies show that RIF1 is overexpressed in breast cancer tissues and is upregulated in NSCLC tissues (PMID: 30237512).

Storage

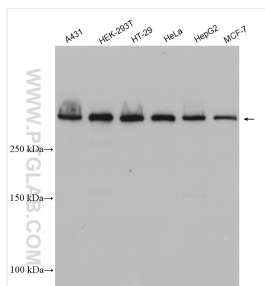
Storage:
Store at -20°C. Stable for one year after shipment.
Storage Buffer:
PBS with 0.02% sodium azide and 50% glycerol pH 7.3.
Aliquoting is unnecessary for -20°C storage

*** 20ul sizes contain 0.1% BSA

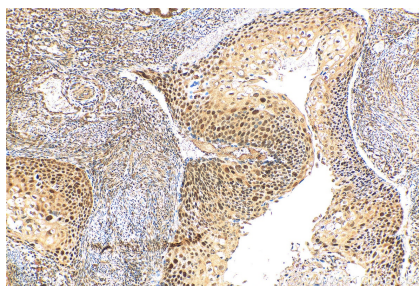
For technical support and original validation data for this product please contact:
T: 1 (888) 4PTGLAB (1-888-478-4522) (toll free in USA), or 1(312) 455-8498 (outside USA)
E: proteintech@ptglab.com
W: ptglab.com

This product is exclusively available under Proteintech Group brand and is not available to purchase from any other manufacturer.

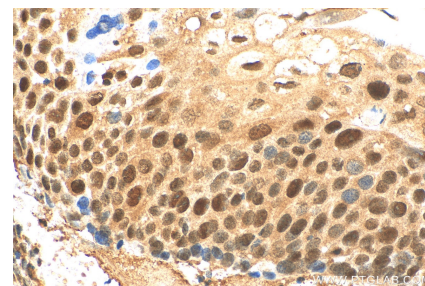
Selected Validation Data



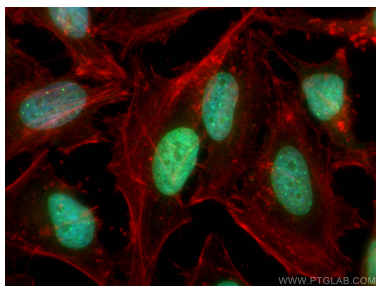
Various lysates were subjected to SDS PAGE followed by western blot with 30119-1-AP (RIF1 antibody) at dilution of 1:2000 incubated at room temperature for 1.5 hours.



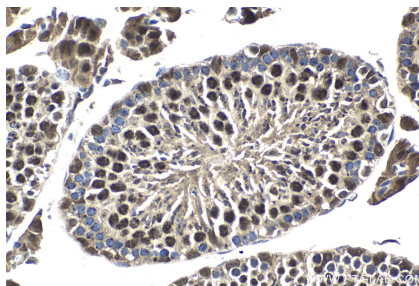
Immunohistochemical analysis of paraffin-embedded human cervical cancer tissue slide using 30119-1-AP (RIF1 antibody) at dilution of 1:800 (under 10x lens). Heat mediated antigen retrieval with Tris-EDTA buffer (pH 9.0).



Immunohistochemical analysis of paraffin-embedded human cervical cancer tissue slide using 30119-1-AP (RIF1 antibody) at dilution of 1:800 (under 40x lens). Heat mediated antigen retrieval with Tris-EDTA buffer (pH 9.0).



Immunofluorescent analysis of (4% PFA) fixed HeLa cells using RIF1 antibody (30119-1-AP) at dilution of 1:1200 and CoraLite®488-Conjugated Goat Anti-Rabbit IgG(H+L), CL594-Phalloidin (red).



Immunohistochemical analysis of paraffin-embedded mouse testis tissue slide using 30119-1-AP (RIF1 antibody) at dilution of 1:1000 (under 40x lens). Heat mediated antigen retrieval with Tris-EDTA buffer (pH 9.0).