

For Research Use Only

C4orf26 Polyclonal antibody

Catalog Number: 30132-1-AP



Basic Information

Catalog Number: 30132-1-AP	GenBank Accession Number: NM_001206981	Purification Method: Antigen affinity purification
Size: 150ul , Concentration: 400 ug/ml by Nanodrop;	GeneID (NCBI): 152816	Recommended Dilutions: IHC 1:50-1:500
Source: Rabbit	UNIPROT ID: Q17RF5	
Isotype: IgG	Full Name: chromosome 4 open reading frame 26	
Immunogen Catalog Number: AG32600	Calculated MW: 16kd	

Applications

Tested Applications: IHC, ELISA	Positive Controls: IHC : human placenta tissue,
Species Specificity: human	
Note-IHC: suggested antigen retrieval with TE buffer pH 9.0; (*) Alternatively, antigen retrieval may be performed with citrate buffer pH 6.0	

Background Information

Chromosome 4 open reading frame 26 (C4orf26), also known as odontogenesis associated phosphoprotein (ODAPH), is an enamel matrix protein at the maturation stage. It has been reported that mutations in C4orf26 gene are associated with autosomal recessive type of Amelogenesis Imperfecta (AI), a hereditary condition that affects enamel formation/mineralization (PMID: 33884476; PMID: 36163390).

Storage

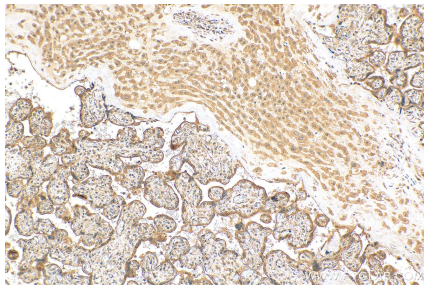
Storage:
Store at -20°C. Stable for one year after shipment.
Storage Buffer:
PBS with 0.02% sodium azide and 50% glycerol pH 7.3.
Aliquoting is unnecessary for -20°C storage

*** 20ul sizes contain 0.1% BSA

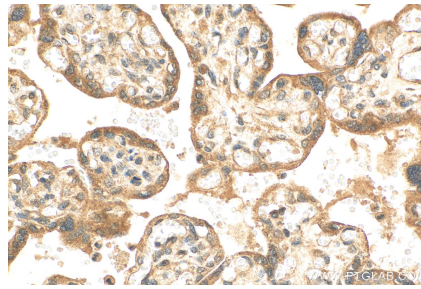
For technical support and original validation data for this product please contact:
T: 1 (888) 4PTGLAB (1-888-478-4522) (toll free in USA), or 1(312) 455-8498 (outside USA)
E: proteintech@ptglab.com
W: ptglab.com

This product is exclusively available under Proteintech Group brand and is not available to purchase from any other manufacturer.

Selected Validation Data



Immunohistochemical analysis of paraffin-embedded human placenta tissue slide using 30132-1-AP (C4orf26 antibody) at dilution of 1:200 (under 10x lens). Heat mediated antigen retrieval with Tris-EDTA buffer (pH 9.0).



Immunohistochemical analysis of paraffin-embedded human placenta tissue slide using 30132-1-AP (C4orf26 antibody) at dilution of 1:200 (under 40x lens). Heat mediated antigen retrieval with Tris-EDTA buffer (pH 9.0).