

For Research Use Only

# CETP Polyclonal antibody

Catalog Number: 30136-1-AP



## Basic Information

<b>Catalog Number:</b> 30136-1-AP	<b>GenBank Accession Number:</b> BC025739	<b>Purification Method:</b> Antigen affinity purification
<b>Size:</b> 150ul , Concentration: 400 µg/ml by Nanodrop;	<b>GeneID (NCBI):</b> 1071	<b>Recommended Dilutions:</b> WB 1:500-1:1000
<b>Source:</b> Rabbit	<b>Full Name:</b> cholesteryl ester transfer protein, plasma	
<b>Isotype:</b> IgG	<b>Calculated MW:</b> 493 aa, 55 kDa	
<b>Immunogen Catalog Number:</b> AG32722	<b>Observed MW:</b> 55,70 kDa	

## Applications

<b>Tested Applications:</b> WB, ELISA	<b>Positive Controls:</b> WB : HCT 116 cells, HT-29 cells, HepG2 cells, MCF-7 cells
<b>Species Specificity:</b> Human	

## Background Information

Cholesteryl ester transfer protein (CETP) is a plasma glycoprotein which transfers cholesteryl esters, triglycerides, and phospholipids between lipoproteins. In plasma, CETP is mainly associated with HDL particles and catalyzes the transfer of cholesteryl esters from HDL to apolipoprotein (apo) B-containing plasma lipoproteins. Low plasma concentrations of high-density lipoprotein-cholesterol (HDL-C) have long been recognized as a major, independent cardiovascular disease (CVD) risk factor. It demonstrated that altered level of plasma CETP was associated with the increased risk of CVD (PMID: 17991755, PMID: 23477743). CETP can be detected a 70 kDa isoform by glycosylation (PMID: 3281933, PMID: 22056562). It also can be detected 100 kDa dimer (PMID: 7744792).

## Storage

**Storage:**  
Store at -20°C. Stable for one year after shipment.  
**Storage Buffer:**  
PBS with 0.02% sodium azide and 50% glycerol pH 7.3.  
Aliquoting is unnecessary for -20°C storage

\*\*\* 20ul sizes contain 0.1% BSA

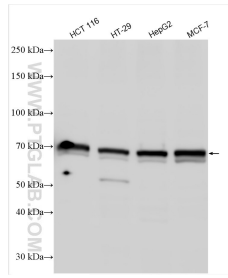
For technical support and original validation data for this product please contact:

T: 1 (888) 4PTGLAB (1-888-478-4522) (toll free in USA), or 1(312) 455-8498 (outside USA)

E: [proteintech@ptglab.com](mailto:proteintech@ptglab.com)  
W: [ptglab.com](http://ptglab.com)

This product is exclusively available under Proteintech Group brand and is not available to purchase from any other manufacturer.

## Selected Validation Data



Various lysates were subjected to SDS PAGE followed by western blot with 30136-1-AP (C/EBP antibody) at dilution of 1:500 incubated at room temperature for 1.5 hours.