

For Research Use Only

EGFR Polyclonal antibody

Catalog Number: 30139-1-AP



Basic Information

Catalog Number:

30139-1-AP

Size:

150ul, Concentration: 750 ug/ml by Nanodrop;

Source:

Rabbit

Isotype:

IgG

GenBank Accession Number:

NM_005228.5

GeneID (NCBI):

1956

UNIPROT ID:

P00533

Full Name:

epidermal growth factor receptor (erythroblastic leukemia viral (v-erb-b) oncogene homolog, avian)

Calculated MW:

134kd

Observed MW:

145-165 kDa

Purification Method:

Antigen affinity purification

Recommended Dilutions:

WB 1:5000-1:50000

IP 0.5-4.0 ug for 1.0-3.0 mg of total protein lysate

IF/ICC 1:750-1:3000

Applications

Tested Applications:

WB, IF/ICC, FC, IP, ELISA

Species Specificity:

human

Positive Controls:

WB : A431 cells,

IP : HeLa cells,

IF/ICC : A431 cells, HaCaT cells

Background Information

EGFR is a receptor for EGF, but also for other members of the EGF family, as TGF- α , amphiregulin, betacellulin, heparin-binding EGF-like growth factor, GP30 and vaccinia virus growth factor. ERBB1 is involved in the control of cell growth and differentiation. Phosphorylates MUC1 in breast cancer cells and increases the interaction of MUC1 with C-SRC and CTNNB1/beta-catenin. Isoform 2/truncated isoform of ERBB1 may act as an antagonist. EGFR is associated with lung cancer.

Storage

Storage:

Store at -20°C. Stable for one year after shipment.

Storage Buffer:

PBS with 0.02% sodium azide and 50% glycerol pH 7.3.

Aliquoting is unnecessary for -20°C storage

*** 20ul sizes contain 0.1% BSA

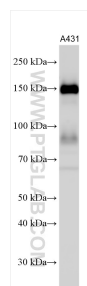
For technical support and original validation data for this product please contact:

T: 1 (888) 4PTGLAB (1-888-478-4522) (toll free in USA), or 1(312) 455-8498 (outside USA)

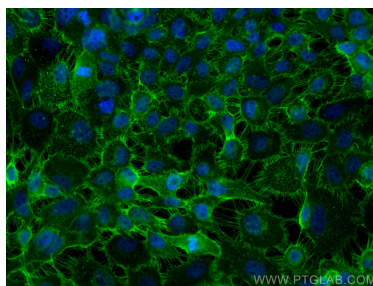
E: proteintech@ptglab.com
W: ptglab.com

This product is exclusively available under Proteintech Group brand and is not available to purchase from any other manufacturer.

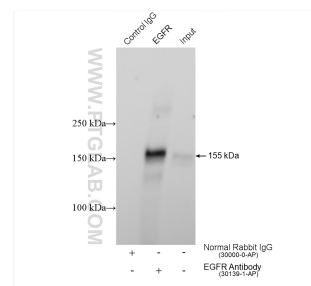
Selected Validation Data



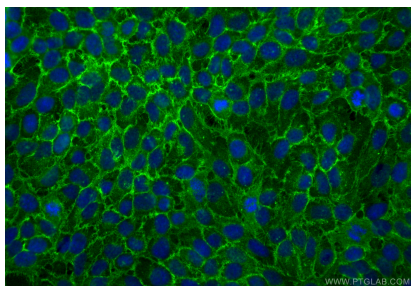
A431 cells were subjected to SDS PAGE followed by western blot with 30139-1-AP (EGFR antibody) at dilution of 1:20000 incubated at room temperature for 1.5 hours.



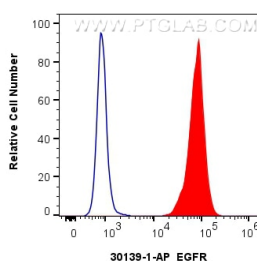
Immunofluorescent analysis of (4% PFA) fixed A431 cells using EGFR antibody (30139-1-AP) at dilution of 1:1500 and CoraLite®488-Conjugated AffiniPure Goat Anti-Rabbit IgG(H+L).



IP result of anti-EGFR (IP:30139-1-AP, 4ug; Detection:30139-1-AP 1:4000) with HeLa cells lysate 1520 ug.



Immunofluorescent analysis of (-20°C Methanol) fixed HaCaT cells using EGFR antibody (30139-1-AP) at dilution of 1:400 and CoraLite®488-Conjugated Goat Anti-Rabbit IgG(H+L) (SA00013-2).



1×10^6 A431 cells were surface stained with 0.25 ug EGFR Polyclonal antibody (30139-1-AP) and CoraLite®488-Conjugated Goat Anti-Rabbit IgG(H+L) (SA00013-2)(red), or 0.25 ug Rabbit IgG control Rabbit PolyAb (30000-0-AP) (blue). Cells were not fixed.