

For Research Use Only

# KIF13B Polyclonal antibody

Catalog Number: 30141-1-AP

Featured Product



## Basic Information

### Catalog Number:

30141-1-AP

### Size:

150ul, Concentration: 300 ug/ml by Nanodrop;

### Source:

Rabbit

### Isotype:

IgG

### Immunogen Catalog Number:

AG30876

### GenBank Accession Number:

NM\_015254

### GeneID (NCBI):

23303

### UNIPROT ID:

Q9NQT8

### Full Name:

kinesin family member 13B

### Calculated MW:

203 kDa

### Observed MW:

250 kDa

### Purification Method:

Antigen affinity purification

### Recommended Dilutions:

WB 1:500-1:3000

IP 0.5-4.0 ug for 1.0-3.0 mg of total protein lysate

IHC 1:150-1:600

## Applications

### Tested Applications:

WB, IHC, IP, ELISA

### Species Specificity:

human

**Note-IHC: suggested antigen retrieval with TE buffer pH 9.0; (\*) Alternatively, antigen retrieval may be performed with citrate buffer pH 6.0**

### Positive Controls:

WB : HEK-293 cells, HepG2 cells, HeLa cells, Jurkat cells, K-562 cells

IP : HEK-293 cells,

IHC : human stomach cancer tissue,

## Background Information

KIF13B, Also known as GAKIN, is a 250-kD phosphoprotein. KIF13B contains a consensus ATP/GTP-binding motif within its N-terminal motor domain; a stalk domain containing several short alpha-helical segments; and a CAP-gly motif in its C terminus characteristic of microtubule-based cytoskeleton components(PMID: 10859302).

## Storage

### Storage:

Store at -20°C. Stable for one year after shipment.

### Storage Buffer:

PBS with 0.02% sodium azide and 50% glycerol, pH7.3

Aliquoting is unnecessary for -20°C storage

\*\*\* 20ul sizes contain 0.1% BSA

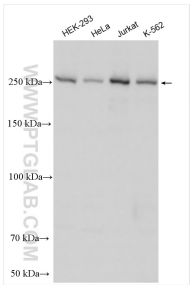
For technical support and original validation data for this product please contact:

T: 1 (888) 4PTGLAB (1-888-478-4522) (toll free in USA), or 1(312) 455-8498 (outside USA)

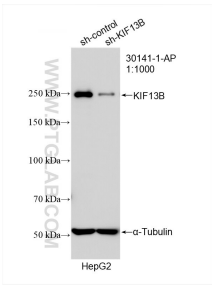
E: [proteintech@ptglab.com](mailto:proteintech@ptglab.com)  
W: [ptglab.com](http://ptglab.com)

This product is exclusively available under Proteintech Group brand and is not available to purchase from any other manufacturer.

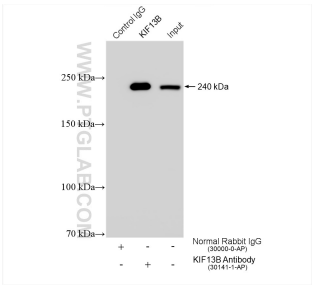
Selected Validation Data



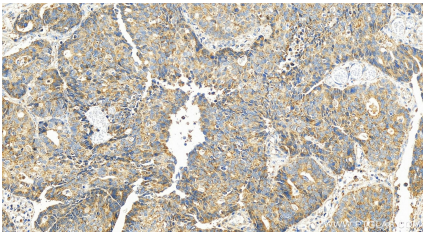
Various lysates were subjected to SDS PAGE followed by western blot with 30141-1-AP (KIF13B antibody) at dilution of 1:1500 incubated at room temperature for 1.5 hours.



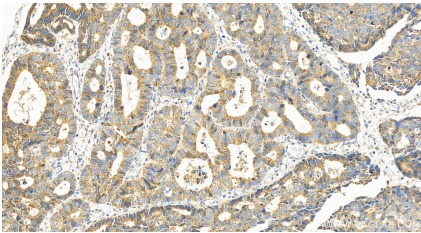
WB result of KIF13B antibody (30141-1-AP; 1:1000; incubated at room temperature for 1.5 hours) with sh-Control and sh-KIF13B transfected HepG2 cells.



IP result of anti-KIF13B (IP:30141-1-AP, 4ug; Detection:30141-1-AP 1:800) with HEK-293 cells lysate 1400 ug.



Immunohistochemical analysis of paraffin-embedded human stomach cancer tissue slide using 30141-1-AP (KIF13B antibody) at dilution of 1:300 (under 20x lens). Heat mediated antigen retrieval with Tris-EDTA buffer (pH 9.0).



Immunohistochemical analysis of paraffin-embedded human stomach cancer tissue slide using 30141-1-AP (KIF13B antibody) at dilution of 1:300 (under 20x lens). Heat mediated antigen retrieval with Tris-EDTA buffer (pH 9.0).