

For Research Use Only

KIF13B Polyclonal antibody, PBS Only

Catalog Number: 30141-1-PBS

Featured Product



Basic Information

Catalog Number:

30141-1-PBS

Size:

100ug, Concentration: 1 mg/ml by Nanodrop;

Source:

Rabbit

Isotype:

IgG

Immunogen Catalog Number:

AG30876

GenBank Accession Number:

NM_015254

GeneID (NCBI):

23303

UNIPROT ID:

Q9NQT8

Full Name:

kinesin family member 13B

Calculated MW:

203 kDa

Observed MW:

250 kDa

Purification Method:

Antigen affinity purification

Applications

Tested Applications:

WB, IHC, IP, Indirect ELISA

Species Specificity:

human

Background Information

KIF13B, Also known as GAKIN, is a 250-kD phosphoprotein. KIF13B contains a consensus ATP/GTP-binding motif within its N-terminal motor domain; a stalk domain containing several short alpha-helical segments; and a CAP-gly motif in its C terminus characteristic of microtubule-based cytoskeleton components (PMID: 10859302).

Storage

Storage:

Store at -80°C.

Storage Buffer:

PBS only, pH7.3

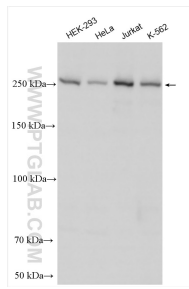
For technical support and original validation data for this product please contact:

T: 1 (888) 4PTGLAB (1-888-478-4522) (toll free in USA), or 1(312) 455-8498 (outside USA)

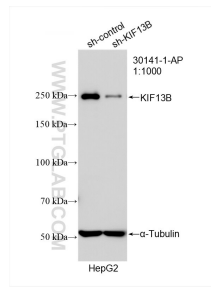
E: proteintech@ptglab.com
W: ptglab.com

This product is exclusively available under Proteintech Group brand and is not available to purchase from any other manufacturer.

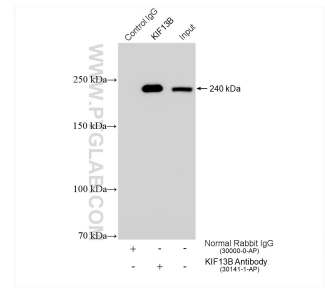
Selected Validation Data



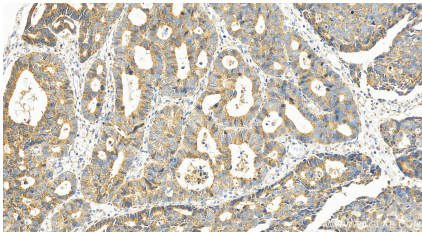
Various lysates were subjected to SDS PAGE followed by western blot with 30141-1-AP (KIF13B antibody) at dilution of 1:1500 incubated at room temperature for 1.5 hours. This data was developed using the same antibody clone with 30141-1-PBS in a different storage buffer formulation.



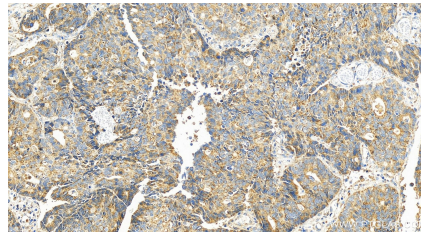
WB result of KIF13B antibody (30141-1-AP; 1:1000; incubated at room temperature for 1.5 hours) with sh-Control and sh-KIF13B transfected HepG2 cells. This data was developed using the same antibody clone with 30141-1-PBS in a different storage buffer formulation.



IP result of anti-KIF13B (IP:30141-1-AP, 4ug; Detection:30141-1-AP 1:800) with HEK-293 cells lysate 1400 ug. This data was developed using the same antibody clone with 30141-1-PBS in a different storage buffer formulation.



Immunohistochemical analysis of paraffin-embedded human stomach cancer tissue slide using 30141-1-AP (KIF13B antibody) at dilution of 1:300 (under 20x lens). Heat mediated antigen retrieval with Tris-EDTA buffer (pH 9.0). This data was developed using the same antibody clone with 30141-1-PBS in a different storage buffer formulation.



Immunohistochemical analysis of paraffin-embedded human stomach cancer tissue slide using 30141-1-AP (KIF13B antibody) at dilution of 1:300 (under 20x lens). Heat mediated antigen retrieval with Tris-EDTA buffer (pH 9.0). This data was developed using the same antibody clone with 30141-1-PBS in a different storage buffer formulation.