

For Research Use Only

LPHN1 Polyclonal antibody, PBS Only

Catalog Number: 30142-1-PBS



Basic Information

Catalog Number: 30142-1-PBS	GenBank Accession Number: NM_001008701	Purification Method: Antigen affinity purification
Size: 100ug, Concentration: 1 mg/ml by Nanodrop;	GeneID (NCBI): 22859	
Source: Rabbit	UNIPROT ID: O94910	
Isotype: IgG	Full Name: latrophilin 1	
Immunogen Catalog Number: AG31093	Calculated MW: 163 kDa	

Applications

Tested Applications:
IHC, IF-P, Indirect ELISA

Species Specificity:
human, mouse, rat

Background Information

Latrophilin-1 (LPHN1) was isolated as the main high-affinity receptor for α -latrotoxin from black widow spider venom, a powerful presynaptic secretagogue (PMID: 30967757). aGPCR latrophilin 1 (ADGRL1/LPHN1) is involved in controlling energy balance and food intake. Although this receptor is present in adipocytes and many neurons, where it is essential for axon growth cone formation and neuronal. It is present in Adipocytes and many neurons, where it is essential for Axon growth cone formation and neuronal function (PMID: 38664368).

Storage

Storage:
Store at -80°C.

Storage Buffer:
PBS Only

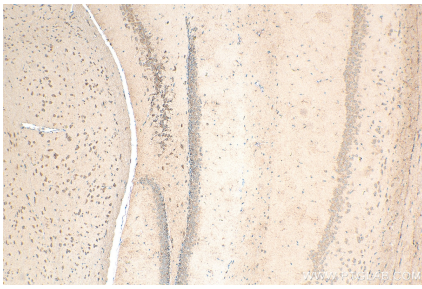
For technical support and original validation data for this product please contact:

T: 1 (888) 4PTGLAB (1-888-478-4522) (toll free
in USA), or 1(312) 455-8498 (outside USA)

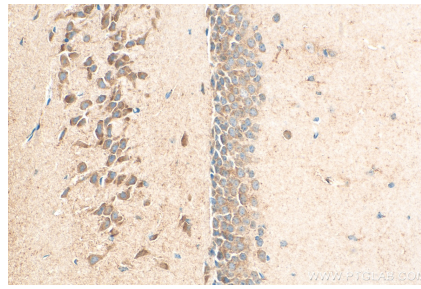
E: proteintech@ptglab.com
W: ptglab.com

This product is exclusively available under Proteintech Group brand and is not available to purchase from any other manufacturer.

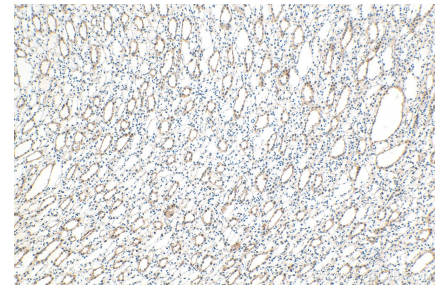
Selected Validation Data



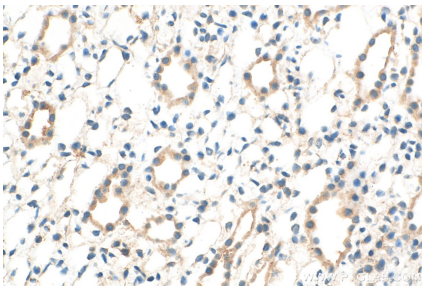
Immunohistochemical analysis of paraffin-embedded mouse brain tissue slide using 30142-1-AP (LPHN1 antibody) at dilution of 1:200 (under 10x lens). Heat mediated antigen retrieval with Tris-EDTA buffer (pH 9.0). This data was developed using the same antibody clone with 30142-1-PBS in a different storage buffer formulation.



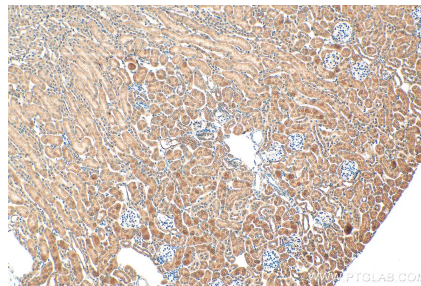
Immunohistochemical analysis of paraffin-embedded mouse brain tissue slide using 30142-1-AP (LPHN1 antibody) at dilution of 1:200 (under 40x lens). Heat mediated antigen retrieval with Tris-EDTA buffer (pH 9.0). This data was developed using the same antibody clone with 30142-1-PBS in a different storage buffer formulation.



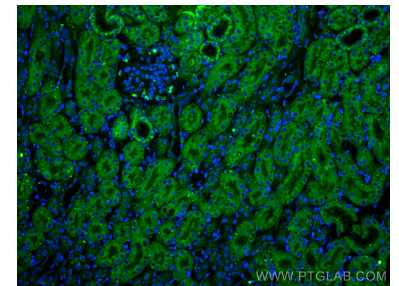
Immunohistochemical analysis of paraffin-embedded rat kidney tissue slide using 30142-1-AP (LPHN1 antibody) at dilution of 1:200 (under 10x lens). Heat mediated antigen retrieval with Tris-EDTA buffer (pH 9.0). This data was developed using the same antibody clone with 30142-1-PBS in a different storage buffer formulation.



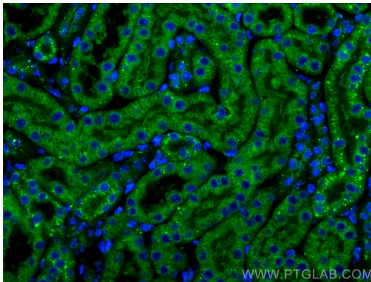
Immunohistochemical analysis of paraffin-embedded rat kidney tissue slide using 30142-1-AP (LPHN1 antibody) at dilution of 1:200 (under 40x lens). Heat mediated antigen retrieval with Tris-EDTA buffer (pH 9.0). This data was developed using the same antibody clone with 30142-1-PBS in a different storage buffer formulation.



Immunohistochemical analysis of paraffin-embedded mouse kidney tissue slide using 30142-1-AP (LPHN1 antibody) at dilution of 1:200 (under 10x lens). Heat mediated antigen retrieval with Tris-EDTA buffer (pH 9.0). This data was developed using the same antibody clone with 30142-1-PBS in a different storage buffer formulation.



Immunofluorescent analysis of (4% PFA) fixed paraffin-embedded mouse kidney tissue using LPHN1 antibody (30142-1-AP) at dilution of 1:200 and Multi-rAb CoraLite® Plus 488-Goat Anti-Rabbit Recombinant Secondary Antibody (H+L) (RGAR002). Heat mediated antigen retrieval with Tris-EDTA buffer (pH 9.0). This data was developed using the same antibody clone with 30142-1-PBS in a different storage buffer formulation.



Immunofluorescent analysis of (4% PFA) fixed paraffin-embedded mouse kidney tissue using LPHN1 antibody (30142-1-AP) at dilution of 1:200 and Multi-rAb CoraLite® Plus 488-Goat Anti-Rabbit Recombinant Secondary Antibody (H+L) (RGAR002). Heat mediated antigen retrieval with Tris-EDTA buffer (pH 9.0). This data was developed using the same antibody clone with 30142-1-PBS in a different storage buffer formulation.