

For Research Use Only

MLKL Polyclonal antibody

Catalog Number: 30145-1-AP

2 Publications



Basic Information

Catalog Number:

30145-1-AP

Size:

150ul, Concentration: 500 ug/ml by Nanodrop;

Source:

Rabbit

Isotype:

IgG

Immunogen Catalog Number:

AG32514

GenBank Accession Number:

NM_001310613

GeneID (NCBI):

74568

UNIPROT ID:

Q9D2Y4

Full Name:

mixed lineage kinase domain-like

Calculated MW:

54kd

Observed MW:

54 kDa

Purification Method:

Antigen affinity purification

Recommended Dilutions:

WB 1:1000-1:6000

IF/ICC 1:200-1:800

Applications

Tested Applications:

WB, IF/ICC, ELISA

Cited Applications:

WB

Species Specificity:

mouse, rat

Cited Species:

mouse

Positive Controls:

WB : NIH/3T3 cells, HSC-T6 cells, 4T1 cells

IF/ICC : NIH/3T3 cells,

Background Information

Mixed lineage kinase domain-like pseudokinase (Mlkl) belongs to the protein kinase superfamily and has two MWs of 54 and 30 kDa. Mlkl plays a critical role in tumor necrosis factor (TNF)-induced necroptosis, a programmed cell death process, via interaction with receptor-interacting protein 3 (RIP3), which is a key signaling molecule in the necroptosis pathway. High levels of this protein and RIP3 are associated with inflammatory bowel disease in children.

Notable Publications

Author	Pubmed ID	Journal	Application
L Bai	39545792	Physiol Res	WB
Hui Liu	38446465	FASEB J	WB

Storage

Storage:

Store at -20°C. Stable for one year after shipment.

Storage Buffer:

PBS with 0.02% sodium azide and 50% glycerol

Aliquoting is unnecessary for -20°C storage

*** 20ul sizes contain 0.1% BSA

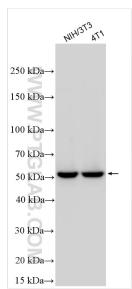
For technical support and original validation data for this product please contact:

T: 1 (888) 4PTGLAB (1-888-478-4522) (toll free in USA), or 1(312) 455-8498 (outside USA)

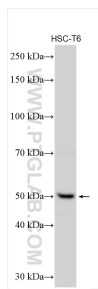
E: proteintech@ptglab.com
W: ptglab.com

This product is exclusively available under Proteintech Group brand and is not available to purchase from any other manufacturer.

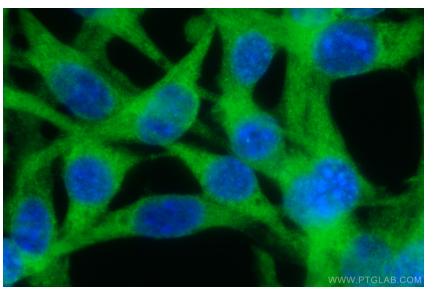
Selected Validation Data



Various lysates were subjected to SDS PAGE followed by western blot with 30145-1-AP (Mkl antibody) at dilution of 1:3000 incubated at room temperature for 1.5 hours.



Various lysates were subjected to SDS PAGE followed by western blot with 30145-1-AP (Mkl antibody) at dilution of 1:2000 incubated at room temperature for 1.5 hours.



Immunofluorescent analysis of (-20°C Ethanol) fixed NIH/3T3 cells using Mkl antibody (30145-1-AP) at dilution of 1:400 and CoraLite®488-Conjugated AffiniPure Goat Anti-Rabbit IgG(H+L).