

For Research Use Only

ISM1 Polyclonal antibody

Catalog Number: 30152-1-AP



Basic Information

Catalog Number:

30152-1-AP

Size:

150ul, Concentration: 650 ug/ml by Nanodrop;

Source:

Rabbit

Isotype:

IgG

Immunogen Catalog Number:

AG32761

GenBank Accession Number:

NM_080826

GeneID (NCBI):

140862

UNIPROT ID:

B1AKI9

Full Name:

isthmin 1 homolog (zebrafish)

Calculated MW:

52kd

Observed MW:

52 kDa, 70 kDa

Purification Method:

Antigen affinity purification

Recommended Dilutions:

WB 1:200-1:1000

Applications

Tested Applications:

WB, ELISA

Species Specificity:

Human

Positive Controls:

WB : HT-29 cells, TT cells

Background Information

ISM1, also known as C20orf82. It is expected to be located in extracellular space, and the protein is enriched in the thyroid gland tissue. Acts as an angiogenesis inhibitor. The protein is predicted to be involved in negative regulation of angiogenesis. Since the molecular weight of the detected ISM1 was larger than expected (52 kD), ISM1 is likely subject to posttranslational modifications. Glycosylation is commonly found in many secreted proteins, and analysis of the ISM1 protein sequence predicted two putative N-glycosylation sites at positions N39 and N282. (PMID: 31171630)

Storage

Storage:

Store at -20°C. Stable for one year after shipment.

Storage Buffer:

PBS with 0.02% sodium azide and 50% glycerol pH 7.3.

Aliquoting is unnecessary for -20°C storage

*** 20ul sizes contain 0.1% BSA

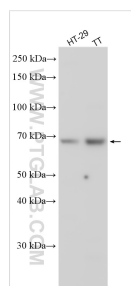
For technical support and original validation data for this product please contact:

T: 1 (888) 4PTGLAB (1-888-478-4522) (toll free in USA), or 1(312) 455-8498 (outside USA)

E: proteintech@ptglab.com
W: ptglab.com

This product is exclusively available under Proteintech Group brand and is not available to purchase from any other manufacturer.

Selected Validation Data



Various lysates were subjected to SDS PAGE followed by western blot with 30152-1-AP (ISM1 antibody) at dilution of 1:300 incubated at room temperature for 1.5 hours.