

For Research Use Only

LACE1 Polyclonal antibody

Catalog Number: 30157-1-AP



Basic Information

Catalog Number: 30157-1-AP	GenBank Accession Number: BC018445	Purification Method: Antigen affinity purification
Size: 150ul , Concentration: 450 µg/ml by Nanodrop;	GeneID (NCBI): 246269	Recommended Dilutions: WB 1:500-1:2000
Source: Rabbit	Full Name: lactation elevated 1	
Isotype: IgG	Calculated MW: 54 kDa	
Immunogen Catalog Number: AG32827	Observed MW: 54-58 kda	

Applications

Tested Applications: WB, ELISA	Positive Controls: WB : A549 cells, HuH-7 cells, mouse liver tissue, rat liver tissue
Species Specificity: Human, mouse, rat	

Background Information

Storage

Storage:
Store at -20°C. Stable for one year after shipment.
Storage Buffer:
PBS with 0.02% sodium azide and 50% glycerol pH 7.3.
Aliquoting is unnecessary for -20°C storage

***** 20ul sizes contain 0.1%BSA**

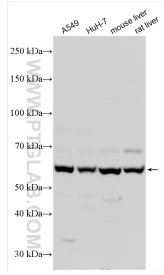
For technical support and original validation data for this product please contact:

T: 1 (888) 4PTGLAB (1-888-478-4522) (toll free
in USA), or 1(312) 455-8498 (outside USA)

E: proteintech@ptglab.com
W: ptglab.com

This product is exclusively available under Proteintech Group brand and is not available to purchase from any other manufacturer.

Selected Validation Data



Various lysates were subjected to SDS PAGE followed by western blot with 30157-1-AP (LACE1 antibody) at dilution of 1:1000 incubated at room temperature for 1.5 hours.