

For Research Use Only

# PACS2 Polyclonal antibody

Catalog Number: 30172-1-AP

Featured Product



## Basic Information

<b>Catalog Number:</b> 30172-1-AP	<b>GenBank Accession Number:</b> NM_001100913	<b>Purification Method:</b> Antigen affinity purification
<b>Size:</b> 150ul , Concentration: 500 µg/ml by Nanodrop;	<b>GeneID (NCBI):</b> 23241	<b>Recommended Dilutions:</b> WB 1:500-1:2000 IP 0.5-4.0 ug for 1.0-3.0 mg of total protein lysate IF 1:200-1:800
<b>Source:</b> Rabbit	<b>Full Name:</b> phosphofurin acidic cluster sorting protein 2	
<b>Isotype:</b> IgG	<b>Calculated MW:</b> 98kd	
<b>Immunogen Catalog Number:</b> AG32902	<b>Observed MW:</b> 100-130 kDa	

## Applications

<b>Tested Applications:</b> IF, IP, WB, ELISA	<b>Positive Controls:</b> WB : HCT 116 cells, HuH-7 cells IP : HCT 116 cells, IF : HCT 116 cells,
<b>Species Specificity:</b> Human	

## Background Information

PACS2, also named PACS1L or KIAA0602, is one of PACS (phosphofurin acidic cluster sorting) proteins which are one such family of multifunctional membrane traffic regulators that mediate organ homeostasis and have important roles in diverse pathologies and disease states. PACS2 is a multifunctional sorting protein that controls the endoplasmic reticulum (ER)-mitochondria communication, ER homeostasis, and apoptosis. PACS2 may be involved in ion channel trafficking, directing acidic cluster-containing ion channels to distinct subcellular compartments.

## Storage

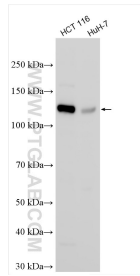
**Storage:**  
Store at -20°C. Stable for one year after shipment.  
**Storage Buffer:**  
PBS with 0.02% sodium azide and 50% glycerol pH 7.3.  
Aliquoting is unnecessary for -20°C storage

\*\*\* 20ul sizes contain 0.1% BSA

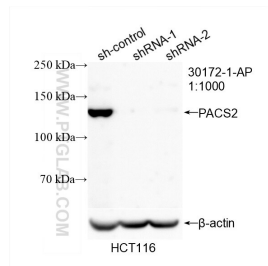
For technical support and original validation data for this product please contact:  
T: 1 (888) 4PTGLAB (1-888-478-4522) (toll free in USA), or 1(312) 455-8498 (outside USA)      E: proteintech@ptglab.com  
W: ptglab.com

This product is exclusively available under Proteintech Group brand and is not available to purchase from any other manufacturer.

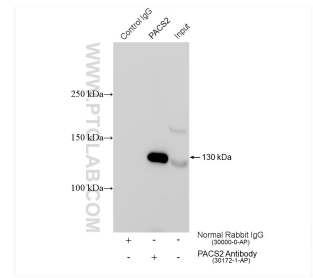
## Selected Validation Data



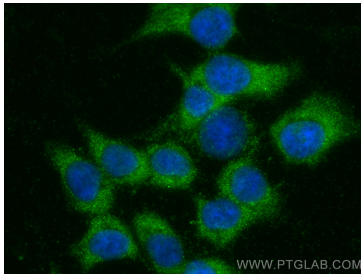
Various lysates were subjected to SDS PAGE followed by western blot with 30172-1-AP (PACS2 antibody) at dilution of 1:1000 incubated at room temperature for 1.5 hours.



WB result of PACS2 antibody (30172-1-AP; 1:1000; incubated at room temperature for 1.5 hours) with sh-Control and sh-PACS2 transfected HCT 116 cells.



IP result of anti-PACS2(IP:30172-1-AP, 4ug; Detection:30172-1-AP 1:1500) with HCT 116 cells lysate 2440 ug.



Immunofluorescent analysis of (-20°C Ethanol) fixed HCT 116 cells using PACS2 antibody (30172-1-AP) at dilution of 1:400 and CoraLite®488-Conjugated AffiniPure Goat Anti-Rabbit IgG(H+L).