

For Research Use Only

LATS1 Polyclonal antibody

Catalog Number: 30174-1-AP **1 Publications**



Basic Information

Catalog Number: 30174-1-AP	GenBank Accession Number: BC002767	Purification Method: Antigen affinity purification
Size: 150ul , Concentration: 850 µg/ml by Nanodrop;	GeneID (NCBI): 9113	Recommended Dilutions: WB 1:2000-1:14000
Source: Rabbit	Full Name: LATS, large tumor suppressor, homolog 1 (Drosophila)	
Isotype: IgG	Observed MW: 130 kDa	
Immunogen Catalog Number: AG32879		

Applications

Tested Applications: WB, ELISA	Positive Controls: WB : A549 cells, HEK-293 cells, HepG2 cells, K-562 cells
Cited Applications: WB	
Species Specificity: Human	
Cited Species: human	

Background Information

LATS1(Large tumor suppressor homolog 1) is also named as WARTS and belongs to the AGC Ser/Thr protein kinase family. The gene encodes a highly conserved (from fly to human) protein kinase that plays a crucial role in the prevention of tumor formation by controlling the progression of mitosis. The expression of both long(170 kDa) and short lats1 isoforms(120 kDa) in vertebrate retinal cells raises the possibility that these lats1 proteins may act as negative key regulators of the cell cycle each of them performing a unique role (PMID:15777619). In mammalian cells, LATS1 was phosphorylated in a cell cycle-dependent manner and complexed with CDC2 in early mitosis (PMID:9988268). LATS1 also can be detected as 120 kDa and 140-150 kDa, and play a key role in the regulation of Hippo pathway (PMID: 27940445).

Notable Publications

Author	Pubmed ID	Journal	Application
Yan Xu	37866243	Biochem Biophys Res Commun	WB

Storage

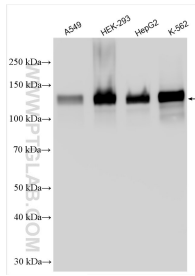
Storage:
Store at -20°C. Stable for one year after shipment.
Storage Buffer:
PBS with 0.02% sodium azide and 50% glycerol pH 7.3.
Aliquoting is unnecessary for -20°C storage

*** 20ul sizes contain 0.1% BSA

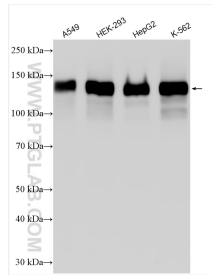
For technical support and original validation data for this product please contact:
T: 1 (888) 4PTGLAB (1-888-478-4522) (toll free in USA), or 1(312) 455-8498 (outside USA)
E: proteintech@ptglab.com
W: ptglab.com

This product is exclusively available under Proteintech Group brand and is not available to purchase from any other manufacturer.

Selected Validation Data



Various lysates were subjected to SDS PAGE followed by western blot with 30174-1-AP (LATS1 antibody) at dilution of 1:3000 incubated at room temperature for 1.5 hours.



Various lysates were subjected to SDS PAGE followed by western blot with 30174-1-AP (LATS1 antibody) at dilution of 1:7000 incubated at room temperature for 1.5 hours.