

For Research Use Only

# LASS2 Polyclonal antibody

Catalog Number: 30183-1-AP

Featured Product



## Basic Information

<b>Catalog Number:</b> 30183-1-AP	<b>GenBank Accession Number:</b> BC010032	<b>Purification Method:</b> Antigen affinity purification
<b>Size:</b> 150ul , Concentration: 500 µg/ml by Nanodrop;	<b>GeneID (NCBI):</b> 29956	<b>Recommended Dilutions:</b> WB 1:1000-1:4000
<b>Source:</b> Rabbit	<b>Full Name:</b> LAG1 homolog, ceramide synthase 2	
<b>Isotype:</b> IgG	<b>Calculated MW:</b> 380 aa, 45 kDa	
<b>Immunogen Catalog Number:</b> AG32769	<b>Observed MW:</b> 37 kDa	

## Applications

<b>Tested Applications:</b> WB, ELISA	<b>Positive Controls:</b> WB : HeLa cells, HepG2 cells, mouse liver tissue, rat liver tissue
<b>Species Specificity:</b> Human, mouse, rat	

## Background Information

LASS2, also known as TMSG1, is a novel suppressor of human cancer metastasis. As one member of LASS family, including LASS1-6, LASS2 mRNA is at the highest level of all LASS members, and has the broadest tissue distribution, particularly abundant in the liver, kidney and brain in mice. The biological roles of LASS2 include protection from aging , hepatic INS resistance, and hepatocellular carcinoma (HCC) progression. LASS2 has been correlated with the degree of invasion and recurrence of carcinomas of the prostate, liver, breast and bladder.

## Storage

**Storage:**  
Store at -20°C. Stable for one year after shipment.  
**Storage Buffer:**  
PBS with 0.02% sodium azide and 50% glycerol pH 7.3.  
Aliquoting is unnecessary for -20°C storage

\*\*\* 20ul sizes contain 0.1% BSA

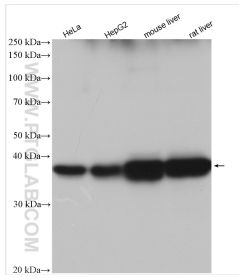
For technical support and original validation data for this product please contact:

T: 1 (888) 4PTGLAB (1-888-478-4522) (toll free in USA), or 1(312) 455-8498 (outside USA)

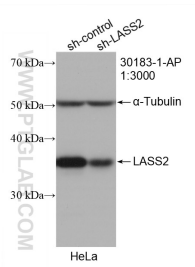
E: [proteintech@ptglab.com](mailto:proteintech@ptglab.com)  
W: [ptglab.com](http://ptglab.com)

This product is exclusively available under Proteintech Group brand and is not available to purchase from any other manufacturer.

## Selected Validation Data



Various lysates were subjected to SDS PAGE followed by western blot with 30183-1-AP (LASS2 antibody) at dilution of 1:2000 incubated at room temperature for 1.5 hours.



WB result of LASS2 antibody (30183-1-AP; 1:3000; incubated at room temperature for 1.5 hours) with sh-Control and sh-LASS2 transfected HeLa cells.