

For Research Use Only

# MEX3B Polyclonal antibody, PBS Only

Catalog Number: 30185-1-PBS



## Basic Information

<b>Catalog Number:</b> 30185-1-PBS	<b>GenBank Accession Number:</b> BC036211	<b>Purification Method:</b> Antigen affinity purification
<b>Size:</b> 100ug , Concentration: 1 mg/ml by Nanodrop;	<b>GeneID (NCBI):</b> 84206	
<b>Source:</b> Rabbit	<b>UNIPROT ID:</b> Q6ZN04	
<b>Isotype:</b> IgG	<b>Full Name:</b> mex-3 homolog B (C. elegans)	
<b>Immunogen Catalog Number:</b> AG32899	<b>Calculated MW:</b> 569 aa, 59 kDa	
	<b>Observed MW:</b> 60-70 kDa	

## Applications

**Tested Applications:**  
WB, Indirect ELISA

**Species Specificity:**  
human, mouse

## Background Information

Human MEX3B (hMEX3B) protein is an RNA-binding protein that contains two KH domains at the N-terminus and a RING domain at its C-terminus, which has the activity of E3 ubiquitin ligase and is essential for RNA degradation.

## Storage

**Storage:**  
Store at -80°C.

**Storage Buffer:**  
PBS only, pH7.3

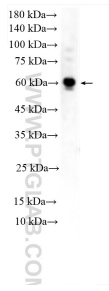
For technical support and original validation data for this product please contact:

T: 1 (888) 4PTGLAB (1-888-478-4522) (toll free  
in USA), or 1(312) 455-8498 (outside USA)

E: [proteintech@ptglab.com](mailto:proteintech@ptglab.com)  
W: [ptglab.com](http://ptglab.com)

**This product is exclusively available under Proteintech Group brand and is not available to purchase from any other manufacturer.**

## Selected Validation Data



C2C12 cells were subjected to SDS PAGE followed by western blot with 30185-1-AP (MEX3B antibody) at dilution of 1:800 incubated at room temperature for 1.5 hours. This data was developed using the same antibody clone with 30185-1-PBS in a different storage buffer formulation.



SGC-7901 cells were subjected to SDS PAGE followed by western blot with 30185-1-AP (MEX3B antibody) at dilution of 1:800 incubated at room temperature for 1.5 hours. This data was developed using the same antibody clone with 30185-1-PBS in a different storage buffer formulation.