

For Research Use Only

CEP162 Polyclonal antibody

Catalog Number: 30210-1-AP



Basic Information

Catalog Number: 30210-1-AP	GenBank Accession Number: NM_001286206.1	Purification Method: Antigen affinity purification
Size: 150ul , Concentration: 500 µg/ml by Nanodrop;	GeneID (NCBI): 22832	Recommended Dilutions: WB 1:500-1:2000 IHC 1:50-1:500
Source: Rabbit	Full Name: KIAA1009	
Isotype: IgG	Calculated MW: 162 kDa	
Immunogen Catalog Number: AG32953	Observed MW: 180 kDa	

Applications

Tested Applications:

IHC, WB, ELISA

Species Specificity:

Human

Note-IHC: suggested antigen retrieval with TE buffer pH 9.0; (*) Alternatively, antigen retrieval may be performed with citrate buffer pH 6.0

Positive Controls:

WB : HEK-293 cells, HeLa cells

IHC : human liver tissue, human placenta tissue

Background Information

CEP162, also known as KIAA1009 and QN1, was found in organisms ranging from trypanosomes to vertebrates. A role for CEP162, involved in required to promote assembly of the transition zone in primary cilia. CEP162 acts by specifically recognizing and binding the axonemal microtubule. CEP162 localizes to the distal ends of centrioles before ciliogenesis and directly binds to axonemal microtubule, thereby promoting and restricting transition zone formation specifically at the cilia base.

Storage

Storage:

Store at -20°C. Stable for one year after shipment.

Storage Buffer:

PBS with 0.02% sodium azide and 50% glycerol pH 7.3.

Aliquoting is unnecessary for -20°C storage

*** 20ul sizes contain 0.1% BSA

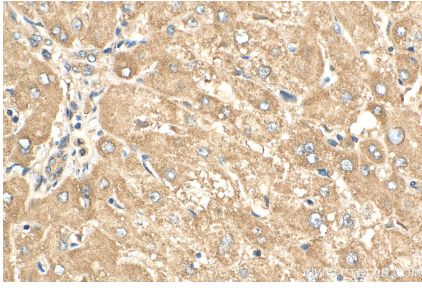
For technical support and original validation data for this product please contact:

T: 1 (888) 4PTGLAB (1-888-478-4522) (toll free in USA), or 1(312) 455-8498 (outside USA)

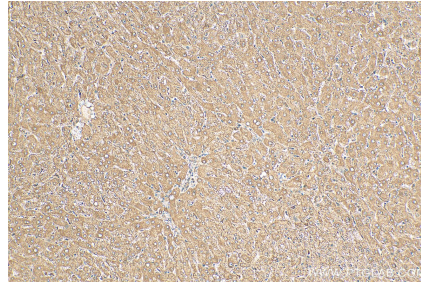
E: proteintech@ptglab.com
W: ptglab.com

This product is exclusively available under Proteintech Group brand and is not available to purchase from any other manufacturer.

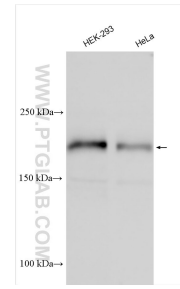
Selected Validation Data



Immunohistochemical analysis of paraffin-embedded human liver tissue slide using 30210-1-AP (CEP162 antibody) at dilution of 1:200 (under 40x lens). Heat mediated antigen retrieval with Tris-EDTA buffer (pH 9.0).



Immunohistochemical analysis of paraffin-embedded human liver tissue slide using 30210-1-AP (CEP162 antibody) at dilution of 1:200 (under 10x lens). Heat mediated antigen retrieval with Tris-EDTA buffer (pH 9.0).



Various lysates were subjected to SDS PAGE followed by western blot with 30210-1-AP (CEP162 antibody) at dilution of 1:1000 incubated at room temperature for 1.5 hours.