

For Research Use Only

LCMT1 Polyclonal antibody

Catalog Number: 30222-1-AP



Basic Information

Catalog Number: 30222-1-AP	GenBank Accession Number: BC001214	Purification Method: Antigen affinity purification
Size: 150ul , Concentration: 500 ug/ml by Nanodrop;	GeneID (NCBI): 51451	Recommended Dilutions: WB 1:500-1:3000 IHC 1:50-1:500
Source: Rabbit	UNIPROT ID: Q9UIC8	
Isotype: IgG	Full Name: leucine carboxyl methyltransferase 1	
Immunogen Catalog Number: AG32038	Calculated MW: 38 kDa	
	Observed MW: 38-41 kDa	

Applications

Tested Applications: WB, IHC, ELISA	Positive Controls:
Species Specificity: Human, Mouse	WB : A549 cells, HEK-293 cells, HeLa cells, HepG2 cells, MCF-7 cells, U-87 MG cells
Note-IHC: suggested antigen retrieval with TE buffer pH 9.0; (*) Alternatively, antigen retrieval may be performed with citrate buffer pH 6.0	IHC : mouse uterus tissue,

Background Information

Leucine carboxyl methyltransferase 1 (LCMT1) belongs to the methyltransferase superfamily (LCMT family). It methylates the carboxyl group of the C-terminal leucine residue of protein phosphatase 2A catalytic subunits to form alpha-leucine ester residues. LCMT1 has 3 isoforms with the MW of 38 kDa, 41 kDa, and 32 kDa.

Storage

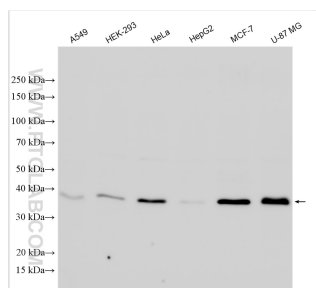
Storage:
Store at -20°C. Stable for one year after shipment.
Storage Buffer:
PBS with 0.02% sodium azide and 50% glycerol pH 7.3.
Aliquoting is unnecessary for -20°C storage

*** 20ul sizes contain 0.1% BSA

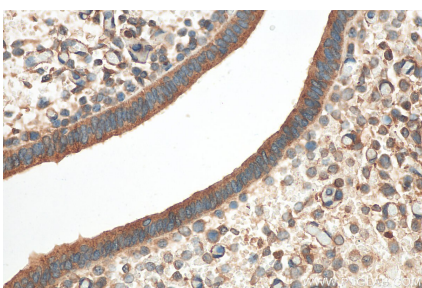
For technical support and original validation data for this product please contact:
T: 1 (888) 4PTGLAB (1-888-478-4522) (toll free in USA), or 1(312) 455-8498 (outside USA)
E: proteintech@ptglab.com
W: ptglab.com

This product is exclusively available under Proteintech Group brand and is not available to purchase from any other manufacturer.

Selected Validation Data



Various lysates were subjected to SDS PAGE followed by western blot with 30222-1-AP (LCMT1 antibody) at dilution of 1:1500 incubated at room temperature for 1.5 hours.



Immunohistochemical analysis of paraffin-embedded mouse uterus tissue slide using 30222-1-AP (LCMT1 antibody) at dilution of 1:200 (under 40x lens). Heat mediated antigen retrieval with Tris-EDTA buffer (pH 9.0).