

For Research Use Only

# Beta-2-Microglobulin Polyclonal antibody



Catalog Number: 30226-1-AP

## Basic Information

<b>Catalog Number:</b> 30226-1-AP	<b>GenBank Accession Number:</b> BC032589	<b>Purification Method:</b> Antigen affinity purification
<b>Size:</b> 150ul , Concentration: 1500 µg/ml by Nanodrop;	<b>GeneID (NCBI):</b> 567	<b>Recommended Dilutions:</b> WB 1:1000-1:4000 IF 1:200-1:800
<b>Source:</b> Rabbit	<b>Full Name:</b> beta-2-microglobulin	
<b>Isotype:</b> IgG	<b>Calculated MW:</b> 119 aa, 14 kDa	
	<b>Observed MW:</b> 12-14 kDa	

## Applications

<b>Tested Applications:</b> IF, WB, ELISA	<b>Positive Controls:</b>
<b>Species Specificity:</b> Human	<b>WB :</b> A431 cells, HepG2 cells, HeLa cells, U-937 cells, Jurkat cells, Raji cells
	<b>IF :</b> NCCIT cells,

## Background Information

Beta-2-microglobulin (B2M) is a component of MHC class I molecules, which are present on the surface of nearly all nucleated cells. It can be found in body fluids under physiologic conditions as a result of shedding from cell surfaces or intracellular release. B2M has various biological functions, including antigen presentation. Investigations reveal that increased synthesis and release of B2M are present in several malignant diseases.

## Storage

**Storage:**  
Store at -20°C. Stable for one year after shipment.

**Storage Buffer:**  
PBS with 0.02% sodium azide and 50% glycerol pH 7.3.

Aliquoting is unnecessary for -20°C storage

\*\*\* 20ul sizes contain 0.1% BSA

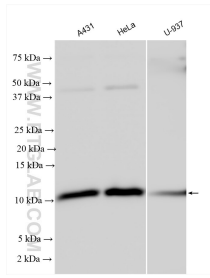
For technical support and original validation data for this product please contact:

T: 1 (888) 4PTGLAB (1-888-478-4522) (toll free in USA), or 1(312) 455-8498 (outside USA)

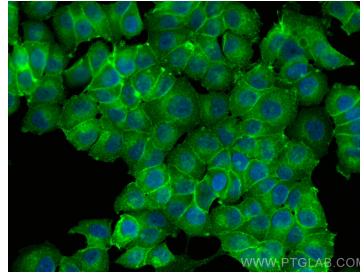
E: [proteintech@ptglab.com](mailto:proteintech@ptglab.com)  
W: [ptglab.com](http://ptglab.com)

This product is exclusively available under Proteintech Group brand and is not available to purchase from any other manufacturer.

## Selected Validation Data



Various lysates were subjected to SDS PAGE followed by western blot with 30226-1-AP (Beta-2-Microglobulin antibody) at dilution of 1:2000 incubated at room temperature for 1.5 hours.



Immunofluorescent analysis of (4% PFA) fixed NCCIT cells using Beta-2-Microglobulin antibody (30226-1-AP) at dilution of 1:400 and CoraLite® 488-Conjugated AffiniPure Goat Anti-Rabbit IgG(H+L).