

For Research Use Only

# WDR43 Polyclonal antibody, PBS Only

Catalog Number:30227-1-PBS



## Basic Information

**Catalog Number:**

30227-1-PBS

**Size:**

100ug , Concentration: 1 mg/ml by Nanodrop;

**Source:**

Rabbit

**Isotype:**

IgG

**Immunogen Catalog Number:**

AG30585

**GenBank Accession Number:**

NM\_015131

**GeneID (NCBI):**

23160

**UNIPROT ID:**

Q15061

**Full Name:**

WD repeat domain 43

**Calculated MW:**

75 kDa

**Observed MW:**

75 kDa

**Purification Method:**

Antigen affinity purification

## Applications

**Tested Applications:**

WB, IHC, IF/ICC, Indirect ELISA

**Species Specificity:**

human

## Background Information

WDR43, a WD40 domain-containing protein, is a conserved component of the small-subunit processome (SSUP), which mediates pre-18S ribosomal RNA (rRNA) transcription and processing in the nucleolus and is critical for ribosome biogenesis in yeast. Its mutation in zebrafish causes a variety of early developmental defects in specific tissues. WDR43 directly promotes ESC self-renewal by maintaining high-level expression of its target genes involved in pluripotency programs. (PMID: 28880863, 24497835, 31128943)

## Storage

**Storage:**

Store at -80°C.

**Storage Buffer:**

PBS only, pH7.3

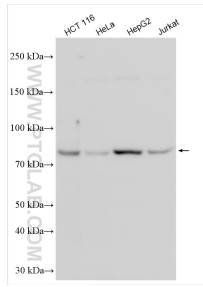
For technical support and original validation data for this product please contact:

T: 1 (888) 4PTGLAB (1-888-478-4522) (toll free in USA), or 1(312) 455-8498 (outside USA)

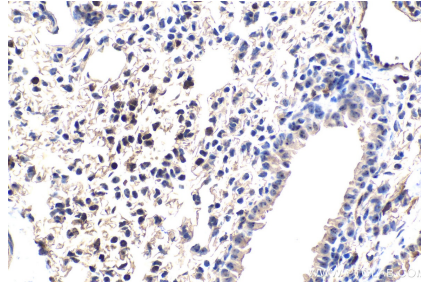
E: [proteintech@ptglab.com](mailto:proteintech@ptglab.com)  
W: [ptglab.com](http://ptglab.com)

**This product is exclusively available under Proteintech Group brand and is not available to purchase from any other manufacturer.**

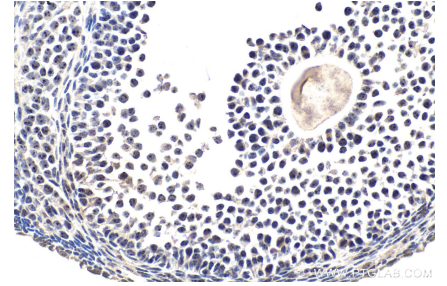
## Selected Validation Data



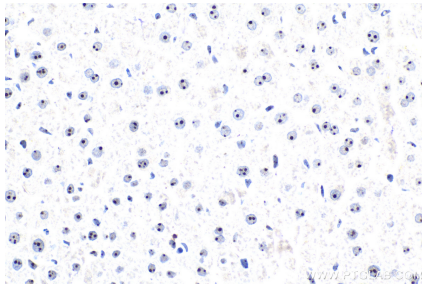
Various lysates were subjected to SDS PAGE followed by western blot with 30227-1-AP (WDR43 antibody) at dilution of 1:2000 incubated at room temperature for 1.5 hours. This data was developed using the same antibody clone with 30227-1-PBS in a different storage buffer formulation.



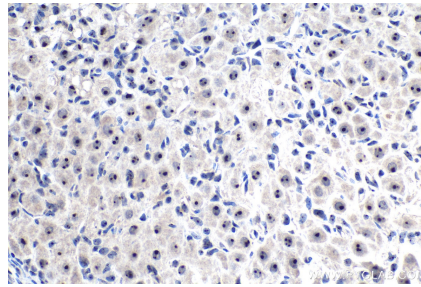
Immunohistochemical analysis of paraffin-embedded mouse lung tissue slide using 30227-1-AP (WDR43 antibody) at dilution of 1:1000 (under 40x lens). Heat mediated antigen retrieval with Tris-EDTA buffer (pH 9.0). This data was developed using the same antibody clone with 30227-1-PBS in a different storage buffer formulation.



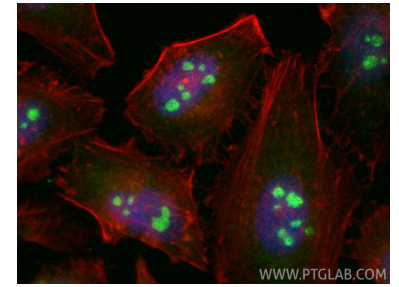
Immunohistochemical analysis of paraffin-embedded mouse ovary tissue slide using 30227-1-AP (WDR43 antibody) at dilution of 1:1000 (under 40x lens). Heat mediated antigen retrieval with Tris-EDTA buffer (pH 9.0). This data was developed using the same antibody clone with 30227-1-PBS in a different storage buffer formulation.



Immunohistochemical analysis of paraffin-embedded rat liver tissue slide using 30227-1-AP (WDR43 antibody) at dilution of 1:1000 (under 40x lens). Heat mediated antigen retrieval with Tris-EDTA buffer (pH 9.0). This data was developed using the same antibody clone with 30227-1-PBS in a different storage buffer formulation.



Immunohistochemical analysis of paraffin-embedded rat ovary tissue slide using 30227-1-AP (WDR43 antibody) at dilution of 1:1000 (under 40x lens). Heat mediated antigen retrieval with Tris-EDTA buffer (pH 9.0). This data was developed using the same antibody clone with 30227-1-PBS in a different storage buffer formulation.



Immunofluorescent analysis of (4% PFA) fixed HeLa cells using WDR43 antibody (30227-1-AP) at dilution of 1:200 and CoraLite@488-Conjugated Goat Anti-Rabbit IgG(H+L) (SA00013-2), CL594-phalloidin (red). This data was developed using the same antibody clone with 30227-1-PBS in a different storage buffer formulation.