

For Research Use Only

SLC7A2 Polyclonal antibody

Catalog Number: 30232-1-AP



Basic Information

Catalog Number:

30232-1-AP

Size:

150ul, Concentration: 450 ug/ml by Nanodrop;

Source:

Rabbit

Isotype:

IgG

Immunogen Catalog Number:

AG31207

GenBank Accession Number:

BC104905

GeneID (NCBI):

6542

UNIPROT ID:

P52569

Full Name:

solute carrier family 7 (cationic amino acid transporter, y+ system), member 2

Calculated MW:

698 aa, 76 kDa

Observed MW:

76 kDa

Purification Method:

Antigen affinity purification

Recommended Dilutions:

WB 1:500-1:1000

IHC 1:50-1:500

Applications

Tested Applications:

WB, IHC, ELISA

Species Specificity:

human, mouse, rat

Note-IHC: suggested antigen retrieval with TE buffer pH 9.0; (*) Alternatively, antigen retrieval may be performed with citrate buffer pH 6.0

Positive Controls:

WB : mouse brain tissue, rat brain tissue

IHC : human stomach cancer tissue,

Background Information

Solute carrier family 7 member 2 (SLC7A2), also known as CAT2, is a member of the solute carrier superfamily. It functions as a cationic amino acid transporter, which can transport cationic amino acids (arginine, lysine and ornithine) into the cytosol and regulate inflammation (PMID: 35152203). It has been shown that lower SLC7A2 expression is associated with worse prognosis of ovarian cancer and hepatocellular carcinoma (PMID: 34108444; 32647070), and SLC7A2 deficiency in inflammatory bowel tissues increases the risk of inflammation-associated colon tumorigenesis (PMID: 30202097)

Storage

Storage:

Store at -20°C. Stable for one year after shipment.

Storage Buffer:

PBS with 0.02% sodium azide and 50% glycerol pH 7.3.

Aliquoting is unnecessary for -20°C storage

*** 20ul sizes contain 0.1% BSA

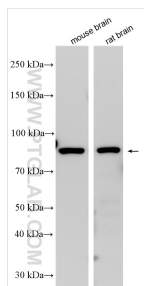
For technical support and original validation data for this product please contact:

T: 1 (888) 4PTGLAB (1-888-478-4522) (toll free in USA), or 1(312) 455-8498 (outside USA)

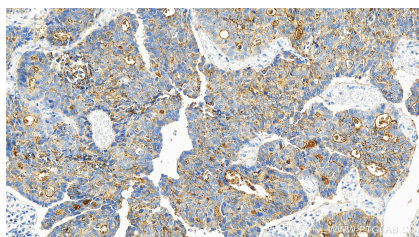
E: proteintech@ptglab.com
W: ptglab.com

This product is exclusively available under Proteintech Group brand and is not available to purchase from any other manufacturer.

Selected Validation Data



Various lysates were subjected to SDS PAGE followed by western blot with 30232-1-AP (SLC7A2 antibody) at dilution of 1:800 incubated at room temperature for 1.5 hours.



Immunohistochemical analysis of paraffin-embedded human stomach cancer tissue slide using 30232-1-AP (SLC7A2 antibody) at dilution of 1:160 (under 20x lens). Heat mediated antigen retrieval with Tris-EDTA buffer (pH 9.0).