

For Research Use Only

# QRICH1 Polyclonal antibody, PBS Only

Catalog Number: 30236-1-PBS

Featured Product



## Basic Information

Catalog Number:

30236-1-PBS

Size:

100ug, Concentration: 1 mg/ml by Nanodrop;

Source:

Rabbit

Isotype:

IgG

Immunogen Catalog Number:

AG31997

GenBank Accession Number:

BC110855

GeneID (NCBI):

54870

UNIPROT ID:

Q2TAL8

Full Name:

glutamine-rich 1

Observed MW:

85-110 kDa

Purification Method:

Antigen affinity purification

## Applications

Tested Applications:

WB, IHC, IF/ICC, Indirect ELISA

Species Specificity:

human, mouse, rat

## Background Information

Glutamine-rich protein 1 (QRICH1) is a transcriptional regulator that acts as a mediator of the integrated stress response (ISR) through transcriptional control of protein homeostasis under conditions of ER stress (PMID:33384352). QRICH1 is a member of the caspase recruitment domain (CARD)-containing gene family, which encodes for proteins implicated in regulation of caspase activation in the context of apoptosis and inflammation, and in regulation of NF- $\kappa$ B signaling (PMID:33384352). QRICH1 can be modified by phosphorylation.

## Storage

Storage:

Store at -80°C.

Storage Buffer:

PBS Only

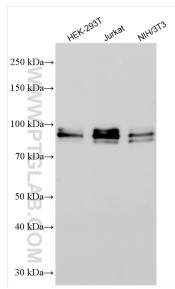
For technical support and original validation data for this product please contact:

T: 1 (888) 4PTGLAB (1-888-478-4522) (toll free in USA), or 1(312) 455-8498 (outside USA)

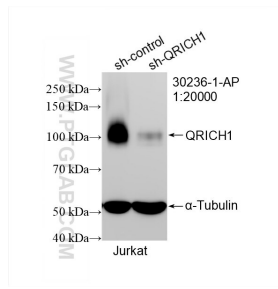
E: [proteintech@ptglab.com](mailto:proteintech@ptglab.com)  
W: [ptglab.com](http://ptglab.com)

This product is exclusively available under Proteintech Group brand and is not available to purchase from any other manufacturer.

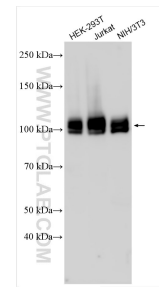
## Selected Validation Data



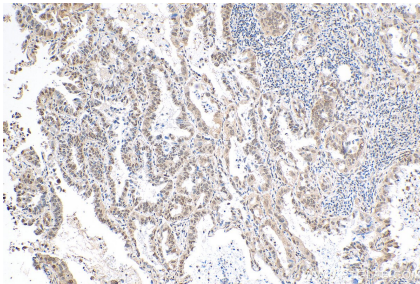
Various lysates were subjected to SDS PAGE followed by western blot with 30236-1-AP (QRICH1 antibody) at dilution of 1:2000 incubated at room temperature for 1.5 hours. This data was developed using the same antibody clone with 30236-1-PBS in a different storage buffer formulation.



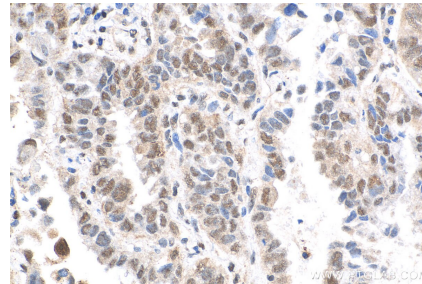
WB result of QRICH1 antibody (30236-1-AP; 1:20000; incubated at room temperature for 1.5 hours) with sh-Control and sh-QRICH1 transfected Jurkat cells. This data was developed using the same antibody clone with 30236-1-PBS in a different storage buffer formulation.



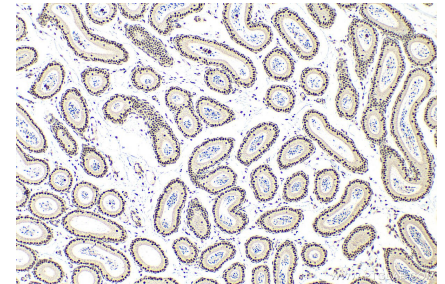
Various lysates were subjected to SDS PAGE followed by western blot with 30236-1-AP (QRICH1 antibody) at dilution of 1:10000 incubated at room temperature for 1.5 hours. This data was developed using the same antibody clone with 30236-1-PBS in a different storage buffer formulation.



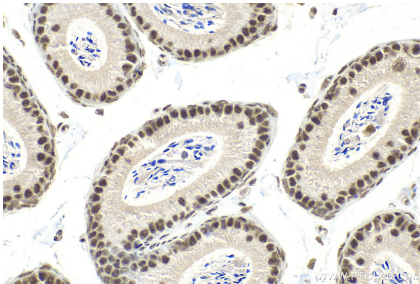
Immunohistochemical analysis of paraffin-embedded human lung cancer tissue slide using 30236-1-AP (QRICH1 antibody) at dilution of 1:200 (under 10x lens). Heat mediated antigen retrieval with Tris-EDTA buffer (pH 9.0). This data was developed using the same antibody clone with 30236-1-PBS in a different storage buffer formulation.



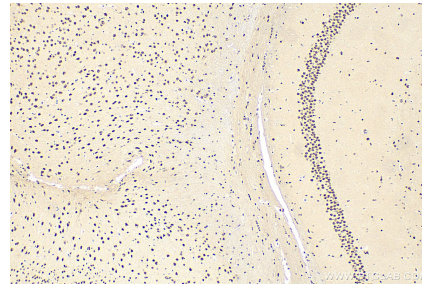
Immunohistochemical analysis of paraffin-embedded human lung cancer tissue slide using 30236-1-AP (QRICH1 antibody) at dilution of 1:200 (under 40x lens). Heat mediated antigen retrieval with Tris-EDTA buffer (pH 9.0). This data was developed using the same antibody clone with 30236-1-PBS in a different storage buffer formulation.



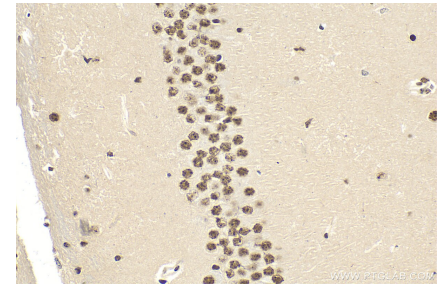
Immunohistochemical analysis of paraffin-embedded mouse testis tissue slide using 30236-1-AP (QRICH1 antibody) at dilution of 1:400 (under 10x lens). Heat mediated antigen retrieval with Tris-EDTA buffer (pH 9.0). This data was developed using the same antibody clone with 30236-1-PBS in a different storage buffer formulation.



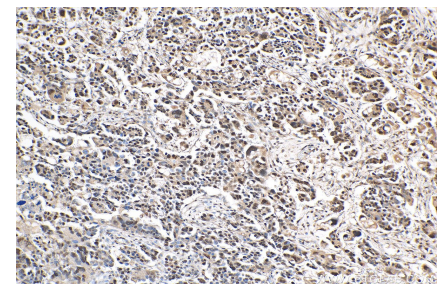
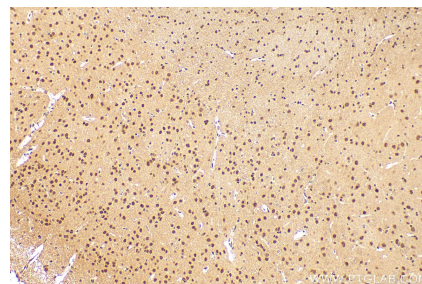
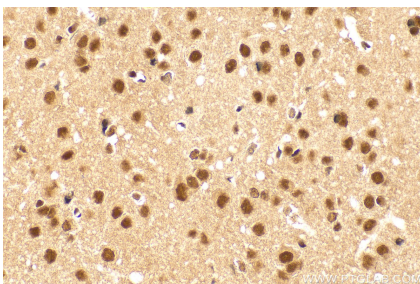
Immunohistochemical analysis of paraffin-embedded mouse testis tissue slide using 30236-1-AP (QRICH1 antibody) at dilution of 1:400 (under 40x lens). Heat mediated antigen retrieval with Tris-EDTA buffer (pH 9.0). This data was developed using the same antibody clone with 30236-1-PBS in a different storage buffer formulation.



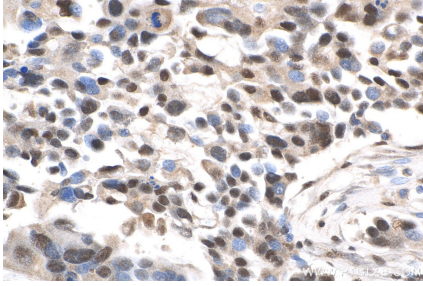
Immunohistochemical analysis of paraffin-embedded mouse brain tissue slide using 30236-1-AP (QRICH1 antibody) at dilution of 1:400 (under 10x lens). Heat mediated antigen retrieval with Tris-EDTA buffer (pH 9.0). This data was developed using the same antibody clone with 30236-1-PBS in a different storage buffer formulation.



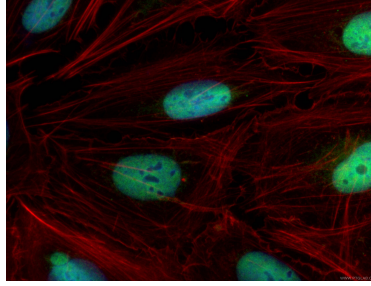
Immunohistochemical analysis of paraffin-embedded mouse brain tissue slide using 30236-1-AP (QRICH1 antibody) at dilution of 1:400 (under 40x lens). Heat mediated antigen retrieval with Tris-EDTA buffer (pH 9.0). This data was developed using the same antibody clone with 30236-1-PBS in a different storage buffer formulation.



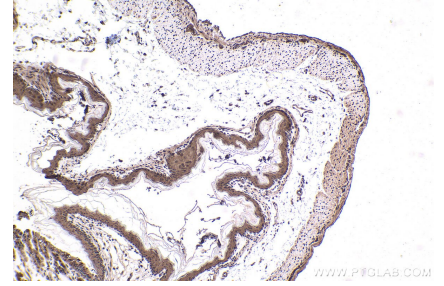
Immunohistochemical analysis of paraffin-embedded rat brain tissue slide using 30236-1-AP (QRICH1 antibody) at dilution of 1:200 (under 40x lens). Heat mediated antigen retrieval with Tris-EDTA buffer (pH 9.0). This data was developed using the same antibody clone with 30236-1-PBS in a different storage buffer formulation.



Immunohistochemical analysis of paraffin-embedded rat brain tissue slide using 30236-1-AP (QRICH1 antibody) at dilution of 1:200 (under 10x lens). Heat mediated antigen retrieval with Tris-EDTA buffer (pH 9.0). This data was developed using the same antibody clone with 30236-1-PBS in a different storage buffer formulation.



Immunohistochemical analysis of paraffin-embedded human colon cancer tissue slide using 30236-1-AP (QRICH1 antibody) at dilution of 1:200 (under 10x lens). Heat mediated antigen retrieval with Tris-EDTA buffer (pH 9.0). This data was developed using the same antibody clone with 30236-1-PBS in a different storage buffer formulation.



Immunohistochemical analysis of paraffin-embedded human colon cancer tissue slide using 30236-1-AP (QRICH1 antibody) at dilution of 1:200 (under 40x lens). Heat mediated antigen retrieval with Tris-EDTA buffer (pH 9.0). This data was developed using the same antibody clone with 30236-1-PBS in a different storage buffer formulation.

Immunofluorescent analysis of (4% PFA) fixed U2OS cells using QRICH1 antibody (30236-1-AP) at dilution of 1:400 and Coralite@488-Conjugated AffiniPure Goat Anti-Rabbit IgG(H+L), CL594-Phalloidin (red). This data was developed using the same antibody clone with 30236-1-PBS in a different storage buffer formulation.

Immunohistochemical analysis of paraffin-embedded mouse stomach tissue slide using 30236-1-AP (QRICH1 antibody) at dilution of 1:1000 (under 10x lens). Heat mediated antigen retrieval with Tris-EDTA buffer (pH 9.0). This data was developed using the same antibody clone with 30236-1-PBS in a different storage buffer formulation.