

For Research Use Only

# YIPF6 Polyclonal antibody

Catalog Number: 30243-1-AP



## Basic Information

<b>Catalog Number:</b> 30243-1-AP	<b>GenBank Accession Number:</b> BC012469	<b>Purification Method:</b> Antigen affinity purification
<b>Size:</b> 150ul , Concentration: 400 ug/ml by Nanodrop;	<b>GeneID (NCBI):</b> 286451	<b>Recommended Dilutions:</b> WB: 1:500-1:2000
<b>Source:</b> Rabbit	<b>UNIPROT ID:</b> Q96EC8	
<b>Isotype:</b> IgG	<b>Full Name:</b> Yip1 domain family, member 6	
<b>Immunogen Catalog Number:</b> AG32477	<b>Calculated MW:</b> 236 aa, 26 kDa	
	<b>Observed MW:</b> 55 kDa	

## Applications

<b>Tested Applications:</b> WB, ELISA	<b>Positive Controls:</b> WB : mouse colon tissue,
<b>Species Specificity:</b> human, mouse	

## Background Information

YIPF6 encodes a Golgi- and ER-localized membrane protein that regulates vesicle trafficking and secretory pathway integrity through interaction with Rab GTPases. Highly expressed in intestinal epithelium and immune tissues, YIPF6 is essential for Paneth and goblet cell granule maturation and mucosal immune homeostasis. Loss of YIPF6 disrupts epithelial secretion and predisposes to inflammatory bowel-like disease, establishing it as a critical regulator of Golgi function and gut barrier defense.

## Storage

**Storage:**  
Store at -20°C. Stable for one year after shipment.  
**Storage Buffer:**  
PBS with 0.02% sodium azide and 50% glycerol, pH7.3  
Aliquoting is unnecessary for -20°C storage

\*\*\* 20ul sizes contain 0.1% BSA

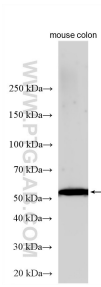
For technical support and original validation data for this product please contact:

T: 1 (888) 4PTGLAB (1-888-478-4522) (toll free in USA), or 1(312) 455-8498 (outside USA)

E: [proteintech@ptglab.com](mailto:proteintech@ptglab.com)  
W: [ptglab.com](http://ptglab.com)

This product is exclusively available under Proteintech Group brand and is not available to purchase from any other manufacturer.

## Selected Validation Data



Various lysates were subjected to SDS PAGE followed by western blot with 30243-1-AP (YIPF6 antibody) at dilution of 1:1000 incubated at room temperature for 1.5 hours.