

For Research Use Only

# DCBLD2 Polyclonal antibody

Catalog Number: 30245-1-AP



## Basic Information

<b>Catalog Number:</b> 30245-1-AP	<b>GenBank Accession Number:</b> BC029658	<b>Purification Method:</b> Antigen affinity purification
<b>Size:</b> 150ul , Concentration: 500 µg/ml by Nanodrop;	<b>GeneID (NCBI):</b> 131566	<b>Recommended Dilutions:</b> WB 1:1000-1:6000
<b>Source:</b> Rabbit	<b>Full Name:</b> discoidin, CUB and LCCL domain containing 2	
<b>Isotype:</b> IgG	<b>Calculated MW:</b> 775 aa, 89 kDa	
<b>Immunogen Catalog Number:</b> AG32823	<b>Observed MW:</b> 120 kDa	

## Applications

<b>Tested Applications:</b> WB, ELISA	<b>Positive Controls:</b> WB : A549 cells, U2OS cells
<b>Species Specificity:</b> Human	

## Background Information

DCBLD2, also known as ESDN or CLCP1, was first identified from human coronary arterial cells by a signal sequence trap method. DCBLD2 regulates proliferation, migration, and invasion in various tumors, including glioma, hypopharyngeal squamous cell carcinoma, and myxofibrosarcoma. The human DCBLD2 protein has a predicted molecular mass of 80 kDa based on its amino acid sequence, although it regularly displays an effective molecular mass of 130 kDa via SDS-PAGE (PMID: 30902898).

## Storage

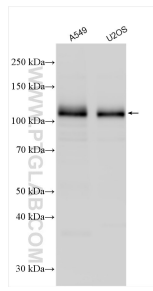
**Storage:**  
Store at -20°C. Stable for one year after shipment.  
**Storage Buffer:**  
PBS with 0.02% sodium azide and 50% glycerol pH 7.3.  
Aliquoting is unnecessary for -20°C storage

\*\*\* 20ul sizes contain 0.1% BSA

For technical support and original validation data for this product please contact:  
T: 1 (888) 4PTGLAB (1-888-478-4522) (toll free in USA), or 1(312) 455-8498 (outside USA) E: proteintech@ptglab.com W: ptglab.com

This product is exclusively available under Proteintech Group brand and is not available to purchase from any other manufacturer.

## Selected Validation Data



Various lysates were subjected to SDS PAGE followed by western blot with 30245-1-AP (DCBLD2 antibody) at dilution of 1:3000 incubated at room temperature for 1.5 hours.