

For Research Use Only

Selenoprotein P Polyclonal antibody

Catalog Number: 30249-1-AP

1 Publications



Basic Information

Catalog Number: 30249-1-AP	GenBank Accession Number: NM_001085486.2	Purification Method: Antigen affinity purification
Size: 150ul , Concentration: 600 ug/ml by Nanodrop;	GeneID (NCBI): 6414	Recommended Dilutions: WB 1:5000-1:50000
Source: Rabbit	UNIPROT ID: P49908	IHC 1:50-1:500
Isotype: IgG	Full Name: selenoprotein P, plasma, 1	IF/ICC 1:200-1:800
Immunogen Catalog Number: AG32952	Calculated MW: 43 kDa	
	Observed MW: 45-50 kDa	

Applications

Tested Applications: WB, IHC, IF/ICC, ELISA	Positive Controls: WB : human plasma,
Cited Applications: WB	IHC : human liver tissue,
Species Specificity: Human	IF/ICC : HepG2 cells,
Cited Species: human	
Note-IHC: suggested antigen retrieval with TE buffer pH 9.0; (*) Alternatively, antigen retrieval may be performed with citrate buffer pH 6.0	

Background Information

Selenoprotein P, also known as SEPP1, is expressed in the liver and heart and secreted into the plasma (PMID: 8421687). Selenoprotein P is implicated as an extracellular antioxidant involved in the transport of selenium to extra-hepatic tissues via apolipoprotein E receptor-2 (apoER2) and provides selenium to tissues such as brain and testis. In humans, it exists in plasma as two isoforms of approximately 50 and 60 kDa (PMID: 19453253). Selenoprotein P is a glycosylated protein and deglycosylation of SEPP1 results in 45 kDa and 35 kDa isoforms (PMID: 25298198).

Notable Publications

Author	Pubmed ID	Journal	Application
Xizi Luo	39470924	Sci China Life Sci	WB

Storage

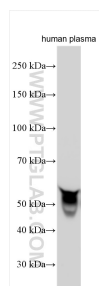
Storage:
Store at -20°C. Stable for one year after shipment.
Storage Buffer:
PBS with 0.02% sodium azide and 50% glycerol pH 7.3.
Aliquoting is unnecessary for -20°C storage

*** 20ul sizes contain 0.1% BSA

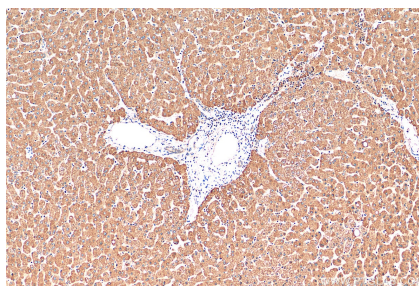
For technical support and original validation data for this product please contact:
T: 1 (888) 4PTGLAB (1-888-478-4522) (toll free in USA), or 1(312) 455-8498 (outside USA)
E: proteintech@ptglab.com
W: ptglab.com

This product is exclusively available under Proteintech Group brand and is not available to purchase from any other manufacturer.

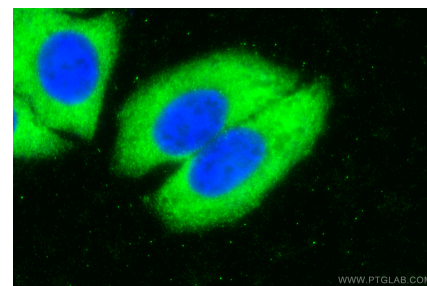
Selected Validation Data



human plasma were subjected to SDS PAGE followed by western blot with 30249-1-AP (Selenoprotein P antibody) at dilution of 1:10000 incubated at room temperature for 1.5 hours.



Immunohistochemical analysis of paraffin-embedded human liver tissue slide using 30249-1-AP (Selenoprotein P antibody) at dilution of 1:200 (under 10x lens). Heat mediated antigen retrieval with Tris-EDTA buffer (pH 9.0).



Immunofluorescent analysis of (-20°C Ethanol) fixed HepG2 cells using Selenoprotein P antibody (30249-1-AP) at dilution of 1:400 and Coralite® 488-Conjugated Goat Anti-Rabbit IgG(H+L).