

For Research Use Only

Selenoprotein P Polyclonal antibody, PBS Only

Catalog Number:30249-1-PBS



Basic Information

Catalog Number: 30249-1-PBS	GenBank Accession Number: NM_001085486.2	Purification Method: Antigen affinity purification
Size: 100ug , Concentration: 1 mg/ml by Nanodrop;	GeneID (NCBI): 6414	
Source: Rabbit	UNIPROT ID: P49908	
Isotype: IgG	Full Name: selenoprotein P, plasma, 1	
Immunogen Catalog Number: AG32952	Calculated MW: 43 kDa	
	Observed MW: 45-50 kDa	

Applications

Tested Applications:
WB, IHC, IF/ICC, FC (Intra), Indirect ELISA

Species Specificity:
human

Background Information

Selenoprotein P, also known as SEPP1, is expressed in the liver and heart and secreted into the plasma(PMID: 8421687). Selenoprotein P is implicated as an extracellular antioxidant involved in the transport of selenium to extra-hepatic tissues via apolipoprotein E receptor-2 (apoER2) and provides selenium to tissues such as brain and testis. In humans, it exists in plasma as two isoforms of approximately 50 and 60 kDa(PMID:19453253). Selenoprotein P is a glycosylated protein and deglycosylation of SEPP1 results in 45 kDa and 35 kDa isoforms(PMID: 25298198).

Storage

Storage:
Store at -80°C.

Storage Buffer:
PBS only, pH7.3

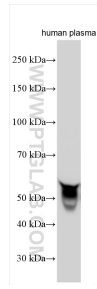
For technical support and original validation data for this product please contact:

T: 1 (888) 4PTGLAB (1-888-478-4522) (toll free
in USA), or 1(312) 455-8498 (outside USA)

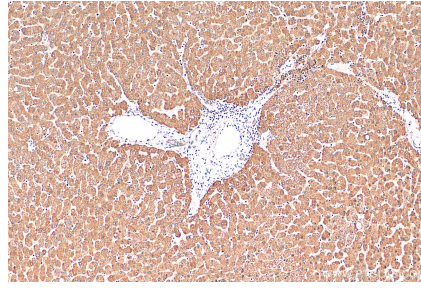
E: proteintech@ptglab.com
W: ptglab.com

This product is exclusively available under Proteintech Group brand and is not available to purchase from any other manufacturer.

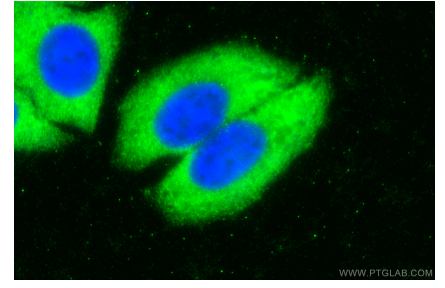
Selected Validation Data



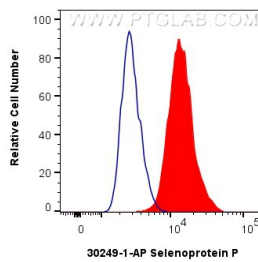
human plasma were subjected to SDS PAGE followed by western blot with 30249-1-AP (Selenoprotein P antibody) at dilution of 1:10000 incubated at room temperature for 1.5 hours. This data was developed using the same antibody clone with 30249-1-PBS in a different storage buffer formulation.



Immunohistochemical analysis of paraffin-embedded human liver tissue slide using 30249-1-AP (Selenoprotein P antibody) at dilution of 1:200 (under 10x lens). Heat mediated antigen retrieval with Tris-EDTA buffer (pH 9.0). This data was developed using the same antibody clone with 30249-1-PBS in a different storage buffer formulation.



Immunofluorescent analysis of (-20°C Ethanol) fixed HepG2 cells using Selenoprotein P antibody (30249-1-AP) at dilution of 1:400 and CoraLite®488-Conjugated AffiniPure Goat Anti-Rabbit IgG(H+L). This data was developed using the same antibody clone with 30249-1-PBS in a different storage buffer formulation.



1x10⁶ HepG2 cells were intracellularly stained with 0.25 ug Selenoprotein P Polyclonal antibody (30249-1-AP) and CoraLite®488-Conjugated Goat Anti-Rabbit IgG(H+L) (SA00013-2)(red), or 0.25 ug Isotype Control (blue). Cells were fixed with 4% PFA and permeabilized with Flow Cytometry Perm Buffer (PF00011-C). This data was developed using the same antibody clone with 30249-1-PBS in a different storage buffer formulation.