

For Research Use Only

CRTAC1 Polyclonal antibody, PBS Only

Catalog Number:30251-1-PBS



Basic Information

Catalog Number:

30251-1-PBS

Size:

100ug , Concentration: 1 mg/ml by Nanodrop;

Source:

Rabbit

Isotype:

IgG

Immunogen Catalog Number:

AG32963

GenBank Accession Number:

BC034245

GeneID (NCBI):

55118

UNIPROT ID:

Q9NQ79

Full Name:

cartilage acidic protein 1

Calculated MW:

661 aa, 71 kDa

Observed MW:

71-100 kDa

Purification Method:

Antigen affinity purification

Applications

Tested Applications:

WB, IHC, Indirect ELISA

Species Specificity:

human, mouse, rat

Background Information

CRTAC1 (Cartilage acidic protein 1) is also named as ASPIC and 68 kDa chondrocyte-expressed protein (CEP-68). Cartilage acidic protein 1 (CRTAC1), a novel human marker which allowed discrimination of human chondrocytes from osteoblasts and mesenchymal stem cells (PMID: 17074475). CRTAC1 is a glycosylated calcium-binding extracellular matrix protein (PMID: 37796703). CRTAC1 acquired an alternate last exon from the tail-to-tail oriented neighbouring gene in humans resulting in the glycosylated isoform CRTAC1-A which represents a new extracellular matrix molecule of articular cartilage (PMID: 17074475). CRTAC1 was downregulated in bladder cancer tissues and cells (PMID: 34818994).

Storage

Storage:

Store at -80°C.

Storage Buffer:

PBS only, pH7.3

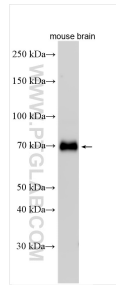
For technical support and original validation data for this product please contact:

T: 1 (888) 4PTGLAB (1-888-478-4522) (toll free in USA), or 1(312) 455-8498 (outside USA)

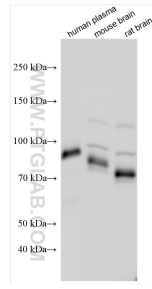
E: proteintech@ptglab.com
W: ptglab.com

This product is exclusively available under Proteintech Group brand and is not available to purchase from any other manufacturer.

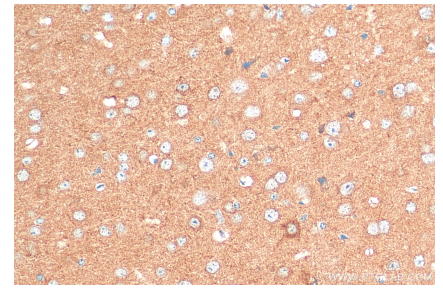
Selected Validation Data



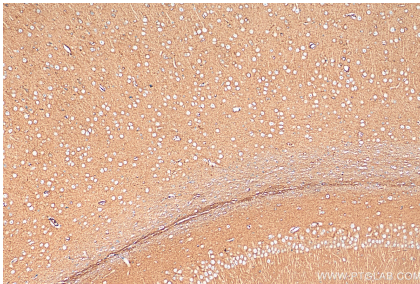
Various lysates were subjected to SDS PAGE followed by western blot with 30251-1-AP (CRTAC1 antibody) at dilution of 1:2000 incubated at room temperature for 1.5 hours. This data was developed using the same antibody clone with 30251-1-PBS in a different storage buffer formulation.



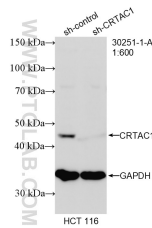
Various lysates were subjected to SDS PAGE followed by western blot with 30251-1-AP (CRTAC1 antibody) at dilution of 1:1500 incubated at room temperature for 1.5 hours. This data was developed using the same antibody clone with 30251-1-PBS in a different storage buffer formulation.



Immunohistochemical analysis of paraffin-embedded mouse brain tissue slide using 30251-1-AP (CRTAC1 antibody) at dilution of 1:200 (under 40x lens). Heat mediated antigen retrieval with Tris-EDTA buffer (pH 9.0). This data was developed using the same antibody clone with 30251-1-PBS in a different storage buffer formulation.



Immunohistochemical analysis of paraffin-embedded rat brain tissue slide using 30251-1-AP (CRTAC1 antibody) at dilution of 1:200 (under 10x lens). Heat mediated antigen retrieval with Tris-EDTA buffer (pH 9.0). This data was developed using the same antibody clone with 30251-1-PBS in a different storage buffer formulation.



WB result of CRTAC1 antibody (30251-1-AP; 1:600; incubated at room temperature for 1.5 hours) with sh-Control and sh-CRTAC1 transfected HCT 116 cells. This data was developed using the same antibody clone with 30251-1-PBS in a different storage buffer formulation.