

For Research Use Only

BLM Polyclonal antibody

Catalog Number: 30254-1-AP



Basic Information

Catalog Number: 30254-1-AP	GenBank Accession Number: GeneID (NCBI): 641	Purification Method: Antigen affinity purification
Size: 150ul , Concentration: 550 µg/ml by Nanodrop;	Full Name: Bloom syndrome, RecQ helicase-like	Recommended Dilutions: WB 1:1000-1:4000
Source: Rabbit	Calculated MW: 159 kDa	
Isotype: IgG	Observed MW: 150-159 kDa	
Immunogen Catalog Number: AG32996		

Applications

Tested Applications: WB, ELISA	Positive Controls: WB : NIH/3T3 cells, HEK-293T cells, HeLa cells, Jurkat cells, K-562 cells
Species Specificity: Human, mouse	

Background Information

BLM participates in DNA replication and repair, it is involved in 5'-end resection of DNA during double-strand break (DSB) repair. BLM can also be recruited by the KHDC3L-OOEP scaffold to DNA replication forks where it is retained by TRIM25 ubiquitination, it thereby promotes the restart of stalled replication forks.

Storage

Storage:
Store at -20°C. Stable for one year after shipment.
Storage Buffer:
PBS with 0.02% sodium azide and 50% glycerol pH 7.3.
Aliquoting is unnecessary for -20°C storage

*** 20ul sizes contain 0.1% BSA

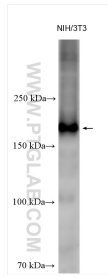
For technical support and original validation data for this product please contact:

T: 1 (888) 4PTGLAB (1-888-478-4522) (toll free in USA), or 1(312) 455-8498 (outside USA)

E: proteintech@ptglab.com
W: ptglab.com

This product is exclusively available under Proteintech Group brand and is not available to purchase from any other manufacturer.

Selected Validation Data



Various lysates were subjected to SDS PAGE followed by western blot with 30254-1-AP (BLM antibody) at dilution of 1:2000 incubated at room temperature for 1.5 hours.



Various lysates were subjected to SDS PAGE followed by western blot with 30254-1-AP (BLM antibody) at dilution of 1:2000 incubated at room temperature for 1.5 hours.