

For Research Use Only

BLM Polyclonal antibody, PBS Only

Catalog Number: 30254-1-PBS



Basic Information

Catalog Number:

30254-1-PBS

Size:

100ug, Concentration: 1 mg/ml by Nanodrop;

Source:

Rabbit

Isotype:

IgG

Immunogen Catalog Number:

AG32996

GenBank Accession Number:

GeneID (NCBI):

641

UNIPROT ID:

P54132

Full Name:

Bloom syndrome, RecQ helicase-like

Calculated MW:

159 kDa

Observed MW:

160-175 kDa

Purification Method:

Antigen affinity purification

Applications

Tested Applications:

WB, Indirect ELISA

Species Specificity:

human, mouse

Background Information

BLM participates in DNA replication and repair, it is involved in 5'-end resection of DNA during double-strand break (DSB) repair. BLM can also be recruited by the KHDC3L-OOEP scaffold to DNA replication forks where it is retained by TRIM25 ubiquitination, it thereby promotes the restart of stalled replication forks.

Storage

Storage:

Store at -80°C.

Storage Buffer:

PBS Only

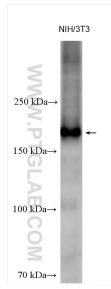
For technical support and original validation data for this product please contact:

T: 1 (888) 4PTGLAB (1-888-478-4522) (toll free in USA), or 1(312) 455-8498 (outside USA)

E: proteintech@ptglab.com
W: ptglab.com

This product is exclusively available under Proteintech Group brand and is not available to purchase from any other manufacturer.

Selected Validation Data



Various lysates were subjected to SDS PAGE followed by western blot with 30254-1-AP (BLM antibody) at dilution of 1:2000 incubated at room temperature for 1.5 hours. This data was developed using the same antibody clone with 30254-1-PBS in a different storage buffer formulation.



Various lysates were subjected to SDS PAGE followed by western blot with 30254-1-AP (BLM antibody) at dilution of 1:2000 incubated at room temperature for 1.5 hours. This data was developed using the same antibody clone with 30254-1-PBS in a different storage buffer formulation.