

For Research Use Only

# SCML1 Polyclonal antibody

Catalog Number: 30257-1-AP

Featured Product



## Basic Information

### Catalog Number:

30257-1-AP

### Size:

150ul, Concentration: 400 ug/ml by Nanodrop;

### Source:

Rabbit

### Isotype:

IgG

### Immunogen Catalog Number:

AG33003

### GenBank Accession Number:

BC026159

### GeneID (NCBI):

6322

### UNIPROT ID:

Q9UN30

### Full Name:

sex comb on midleg-like 1 (Drosophila)

### Calculated MW:

37 kDa

### Observed MW:

42 kDa

### Purification Method:

Antigen affinity purification

### Recommended Dilutions:

WB 1:1000-1:8000

## Applications

### Tested Applications:

WB, ELISA

### Species Specificity:

Human

### Positive Controls:

WB : A549 cells, HepG2 cells

## Background Information

Sex comb on midleg-like 1 (SCML1) is a meiosis-specific protein and is an essential component of the meiotic dense body. SCML1 is preferentially expressed in germ stem cells of testis, therefore likely involved in spermatogenesis.

## Storage

### Storage:

Store at -20°C. Stable for one year after shipment.

### Storage Buffer:

PBS with 0.02% sodium azide and 50% glycerol pH 7.3.

Aliquoting is unnecessary for -20°C storage

\*\*\* 20ul sizes contain 0.1% BSA

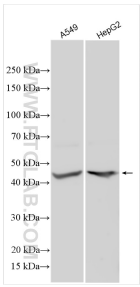
For technical support and original validation data for this product please contact:

T: 1 (888) 4PTGLAB (1-888-478-4522) (toll free in USA), or 1(312) 455-8498 (outside USA)

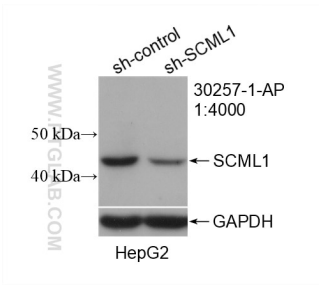
E: [proteintech@ptglab.com](mailto:proteintech@ptglab.com)  
W: [ptglab.com](http://ptglab.com)

This product is exclusively available under Proteintech Group brand and is not available to purchase from any other manufacturer.

Selected Validation Data



Various lysates were subjected to SDS PAGE followed by western blot with 30257-1-AP (SCML1 antibody) at dilution of 1:4000 incubated at room temperature for 1.5 hours.



WB result of SCML1 antibody (30257-1-AP; 1:4000; incubated at room temperature for 1.5 hours) with sh-Control and sh-SCML1 transfected HepG2 cells.