

For Research Use Only

LILRA2 Polyclonal antibody

Catalog Number: 30285-1-AP



Basic Information

Catalog Number:

30285-1-AP

Size:

150ul , Concentration: 450 ug/ml by Nanodrop;

Source:

Rabbit

Isotype:

IgG

Immunogen Catalog Number:

AG32652

GenBank Accession Number:

BC017412

GeneID (NCBI):

11027

UNIPROT ID:

Q8N149

Full Name:

leukocyte immunoglobulin-like receptor, subfamily A (with TM domain), member 2

Calculated MW:

466 aa, 51 kDa

Observed MW:

69 kDa

Purification Method:

Antigen affinity purification

Recommended Dilutions:

WB 1:500-1:2000

Applications

Tested Applications:

WB, ELISA

Species Specificity:

Human

Positive Controls:

WB : A549 cells, HepG2 cells

Storage

Storage:

Store at -20°C. Stable for one year after shipment.

Storage Buffer:

PBS with 0.02% sodium azide and 50% glycerol pH 7.3.

Aliquoting is unnecessary for -20°C storage

*** 20ul sizes contain 0.1% BSA

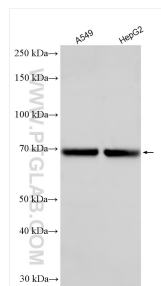
For technical support and original validation data for this product please contact:

T: 1 (888) 4PTGLAB (1-888-478-4522) (toll free in USA), or 1(312) 455-8498 (outside USA)

E: proteintech@ptglab.com
W: ptglab.com

This product is exclusively available under Proteintech Group brand and is not available to purchase from any other manufacturer.

Selected Validation Data



Various lysates were subjected to SDS PAGE followed by western blot with 30285-1-AP (LILRA2 antibody) at dilution of 1:1000 incubated at room temperature for 1.5 hours.