

For Research Use Only

CTRP1 Polyclonal antibody

Catalog Number: 30289-1-AP



Basic Information

Catalog Number: 30289-1-AP	GenBank Accession Number: NM_030968	Purification Method: Antigen affinity purification
Size: 150ul , Concentration: 400 ug/ml by Nanodrop;	GeneID (NCBI): 114897	Recommended Dilutions: WB 1:500-1:2000 IHC 1:200-1:800
Source: Rabbit	UNIPROT ID: Q9BXQ1	
Isotype: IgG	Full Name: C1q and tumor necrosis factor related protein 1	
Immunogen Catalog Number: AG31779	Calculated MW: 32KD	
	Observed MW: 35 kDa	

Applications

Tested Applications: WB, IHC, ELISA	Positive Controls:
Species Specificity: human, mouse	WB : human adipose tissue, IHC : mouse heart tissue, mouse kidney tissue
Note-IHC: suggested antigen retrieval with TE buffer pH 9.0; (*) Alternatively, antigen retrieval may be performed with citrate buffer pH 6.0	

Background Information

C1q and tumor necrosis factor related protein 1(CTRP1), also known as C1QTNF1, is a member of the CTRP superfamily. CTRP1 is a secreted glycoprotein synthesized by a variety of tissues and cells, such as adipose tissue and macrophages. CTRP1 is a paralog of adiponectin. CTRP1 plays a critical role in regulating inflammation and lipid metabolism and acts as a targeted treatment for atherosclerosis, heart failure, hypertension, NAFLD, and diabetes mellitus (PMID: 36812667).

Storage

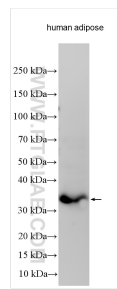
Storage:
Store at -20°C. Stable for one year after shipment.
Storage Buffer:
PBS with 0.02% sodium azide and 50% glycerol
Aliquoting is unnecessary for -20°C storage

*** 20ul sizes contain 0.1% BSA

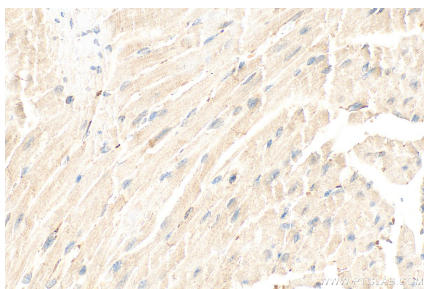
For technical support and original validation data for this product please contact:
T: 1 (888) 4PTGLAB (1-888-478-4522) (toll free in USA), or 1(312) 455-8498 (outside USA)
E: proteintech@ptglab.com
W: ptglab.com

This product is exclusively available under Proteintech Group brand and is not available to purchase from any other manufacturer.

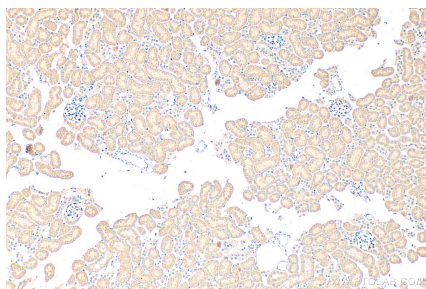
Selected Validation Data



human adipose tissue was subjected to SDS PAGE followed by western blot with 30289-1-AP (CTRP1 antibody) at dilution of 1:1000 incubated at room temperature for 1.5 hours.



Immunohistochemical analysis of paraffin-embedded mouse heart tissue slide using 30289-1-AP (CTRP1 antibody) at dilution of 1:400 (under 40x lens). Heat mediated antigen retrieval with Tris-EDTA buffer (pH 9.0).



Immunohistochemical analysis of paraffin-embedded mouse kidney tissue slide using 30289-1-AP (CTRP1 antibody) at dilution of 1:400 (under 10x lens). Heat mediated antigen retrieval with Tris-EDTA buffer (pH 9.0).