

For Research Use Only

# CTRP1 Polyclonal antibody, PBS Only

Catalog Number:30289-1-PBS



## Basic Information

<b>Catalog Number:</b> 30289-1-PBS	<b>GenBank Accession Number:</b> NM_030968	<b>Purification Method:</b> Antigen affinity purification
<b>Size:</b> 100ug , Concentration: 1 mg/ml by Nanodrop;	<b>GeneID (NCBI):</b> 114897	
<b>Source:</b> Rabbit	<b>UNIPROT ID:</b> Q9BXQ1	
<b>Isotype:</b> IgG	<b>Full Name:</b> C1q and tumor necrosis factor related protein 1	
<b>Immunogen Catalog Number:</b> AG31779	<b>Calculated MW:</b> 32KD	
	<b>Observed MW:</b> 35 kDa	

## Applications

**Tested Applications:**  
WB, IHC, Indirect ELISA

**Species Specificity:**  
human, mouse

## Background Information

C1q and tumor necrosis factor related protein 1(CTRP1), also known as C1QTNF1, is a member of the CTRP superfamily. CTRP1 is a secreted glycoprotein synthesized by a variety of tissues and cells, such as adipose tissue and macrophages. CTRP1 is a paralog of adiponectin. CTRP1 plays a critical role in regulating inflammation and lipid metabolism and acts as a targeted treatment for atherosclerosis, heart failure, hypertension, NAFLD, and diabetes mellitus (PMID: 36812667).

## Storage

**Storage:**  
Store at -80°C.

**Storage Buffer:**  
PBS only

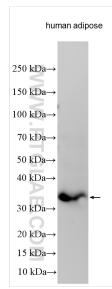
For technical support and original validation data for this product please contact:

T: 1 (888) 4PTGLAB (1-888-478-4522) (toll free in USA), or 1(312) 455-8498 (outside USA)

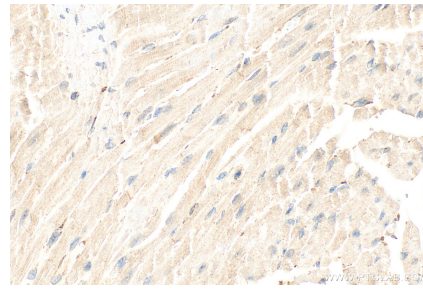
E: [proteintech@ptglab.com](mailto:proteintech@ptglab.com)  
W: [ptglab.com](http://ptglab.com)

**This product is exclusively available under Proteintech Group brand and is not available to purchase from any other manufacturer.**

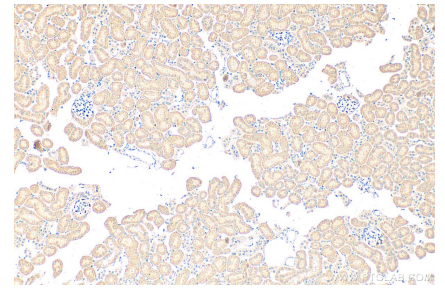
## Selected Validation Data



human adipose tissue was subjected to SDS PAGE followed by western blot with 30289-1-AP (CTRP1 antibody) at dilution of 1:1000 incubated at room temperature for 1.5 hours. This data was developed using the same antibody clone with 30289-1-PBS in a different storage buffer formulation.



Immunohistochemical analysis of paraffin-embedded mouse heart tissue slide using 30289-1-AP (CTRP1 antibody) at dilution of 1:400 (under 40x lens). Heat mediated antigen retrieval with Tris-EDTA buffer (pH 9.0). This data was developed using the same antibody clone with 30289-1-PBS in a different storage buffer formulation.



Immunohistochemical analysis of paraffin-embedded mouse kidney tissue slide using 30289-1-AP (CTRP1 antibody) at dilution of 1:400 (under 10x lens). Heat mediated antigen retrieval with Tris-EDTA buffer (pH 9.0). This data was developed using the same antibody clone with 30289-1-PBS in a different storage buffer formulation.