

For Research Use Only

# CCBL1 Polyclonal antibody

Catalog Number: 30296-1-AP



## Basic Information

<b>Catalog Number:</b> 30296-1-AP	<b>GenBank Accession Number:</b> BC033685	<b>Purification Method:</b> Antigen affinity purification
<b>Size:</b> 150ul , Concentration: 500 µg/ml by Nanodrop;	<b>GeneID (NCBI):</b> 883	<b>Recommended Dilutions:</b> WB 1:500-1:3000 IF 1:50-1:500
<b>Source:</b> Rabbit	<b>Full Name:</b> cysteine conjugate-beta lyase, cytoplasmic	
<b>Isotype:</b> IgG	<b>Observed MW:</b> 48 kDa	
<b>Immunogen Catalog Number:</b> AG32316		

## Applications

<b>Tested Applications:</b> IF, WB, ELISA	<b>Positive Controls:</b> WB : HEK-293 cells, HeLa cells, U-87 MG cells
<b>Species Specificity:</b> Human	<b>IF :</b> HeLa cells,

## Background Information

CCBL1 encodes kynurenine aminotransferase 1 (KAT1), a key enzyme involved in kynurenine pathway. CCBL1 catalyzes the production of kynurenic acid, a powerful endogenous excitatory amino acid receptor antagonist that is widely regarded as the potent neuroprotective agent.

## Storage

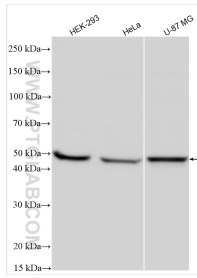
**Storage:**  
Store at -20°C. Stable for one year after shipment.  
**Storage Buffer:**  
PBS with 0.02% sodium azide and 50% glycerol pH 7.3.  
Aliquoting is unnecessary for -20°C storage

\*\*\* 20ul sizes contain 0.1% BSA

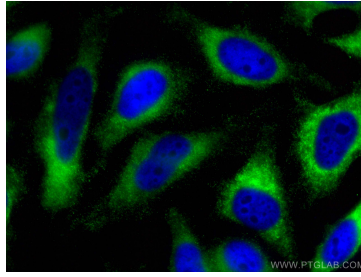
For technical support and original validation data for this product please contact:  
T: 1 (888) 4PTGLAB (1-888-478-4522) (toll free in USA), or 1(312) 455-8498 (outside USA)  
E: proteintech@ptglab.com  
W: ptglab.com

This product is exclusively available under Proteintech Group brand and is not available to purchase from any other manufacturer.

## Selected Validation Data



Various lysates were subjected to SDS PAGE followed by western blot with 30296-1-AP (CCBL1 antibody) at dilution of 1:1500 incubated at room temperature for 1.5 hours.



Immunofluorescent analysis of (-20°C Ethanol) fixed HeLa cells using CCBL1 antibody (30296-1-AP) at dilution of 1:200 and CoraLite® 488-Conjugated AffiniPure Goat Anti-Rabbit IgG(H+L).