

For Research Use Only

Cxcl1 Polyclonal antibody

Catalog Number: 30322-1-AP



Basic Information

Catalog Number: 30322-1-AP	GenBank Accession Number: BC037997	Purification Method: Antigen affinity purification
Size: 150ul , Concentration: 500 µg/ml by Nanodrop;	GeneID (NCBI): 14825	Recommended Dilutions: WB 1:500-1:1000
Source: Rabbit	UNIPROT ID: P12850	
Isotype: IgG	Full Name: chemokine (C-X-C motif) ligand 1	
	Observed MW: 11 kDa	

Applications

Tested Applications: WB, ELISA	Positive Controls: WB : RAW 264.7 cells,
Species Specificity: mouse	

Background Information

CXCL1 a is a member of CXC family and also known as keratinocyte-derived chemokines (KC) or growth-related oncogene (GRO). CXCL1 is expressed by macrophages, neutrophils, and epithelial cells. CXCL1 binding specifically to the CXC chemokine receptor CXCR2, is involved in fibrogenesis and angiogenesis. This protein also plays a role in inflammation and as a chemoattractant for neutrophils.

Storage

Storage:
Store at -20°C. Stable for one year after shipment.
Storage Buffer:
PBS with 0.02% sodium azide and 50% glycerol pH 7.3.
Aliquoting is unnecessary for -20°C storage

*** 20ul sizes contain 0.1% BSA

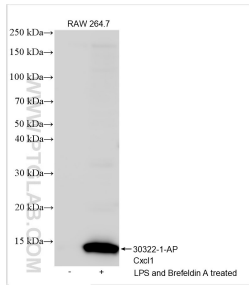
For technical support and original validation data for this product please contact:

T: 1 (888) 4PTGLAB (1-888-478-4522) (toll free in USA), or 1(312) 455-8498 (outside USA)

E: proteintech@ptglab.com
W: ptglab.com

This product is exclusively available under Proteintech Group brand and is not available to purchase from any other manufacturer.

Selected Validation Data



Untreated, LPS and Brefeldin A treated RAW 264.7 cells were subjected to SDS PAGE followed by western blot with 30322-1-AP (Cxcl1 antibody) at dilution of 1:600 incubated at room temperature for 1.5 hours.