

For Research Use Only

ATPAF2 Polyclonal antibody

Catalog Number: 30334-1-AP



Basic Information

Catalog Number: 30334-1-AP	GenBank Accession Number: BC032126	Purification Method: Antigen affinity purification
Size: 150ul , Concentration: 750 µg/ml by Nanodrop;	GeneID (NCBI): 91647	Recommended Dilutions: WB 1:500-1:3000
Source: Rabbit	Full Name: ATP synthase mitochondrial F1 complex assembly factor 2	
Isotype: IgG	Calculated MW: 289 aa, 33 kDa	
Immunogen Catalog Number: AG33299	Observed MW: ~30 kDa	

Applications

Tested Applications: WB, ELISA	Positive Controls: WB : mouse liver tissue,
Species Specificity: Human, mouse	

Background Information

ATP synthase mitochondrial F1 complex assembly factor 2 (ATPAF2) also name as ATP12 and ATP12p, is an essential house keeping protein. ATPAF2 is an assembly factor for the F1 component of mitochondrial ATP synthase. This protein binds specifically to the F1 alpha subunit and is thought to prevent this subunit from forming nonproductive homooligomers during enzyme assembly. The calculated MW is 33 kDa, 30334-1-AP can detect bands around 30 kDa and 50 kDa, the larger band may correspond to dimer or complex form. (PMID: 1826907, 11410595)

Storage

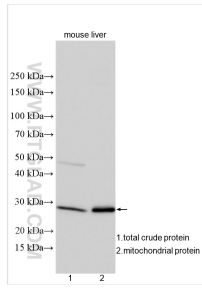
Storage:
Store at -20°C. Stable for one year after shipment.
Storage Buffer:
PBS with 0.02% sodium azide and 50% glycerol pH 7.3.
Aliquoting is unnecessary for -20°C storage

*** 20ul sizes contain 0.1% BSA

For technical support and original validation data for this product please contact:
T: 1 (888) 4PTGLAB (1-888-478-4522) (toll free in USA), or 1(312) 455-8498 (outside USA) E: proteintech@ptglab.com W: ptglab.com

This product is exclusively available under Proteintech Group brand and is not available to purchase from any other manufacturer.

Selected Validation Data



Mouse liver tissues (total crude protein, mitochondrial protein) were subjected to SDS PAGE followed by western blot with 30334-1-AP (ATPAF2 antibody) at dilution of 1:1500 incubated at room temperature for 1.5 hours.