

For Research Use Only

# RB1 Polyclonal antibody

Catalog Number: 30373-1-AP



## Basic Information

<b>Catalog Number:</b> 30373-1-AP	<b>GenBank Accession Number:</b> BC039060	<b>Purification Method:</b> Antigen affinity purification
<b>Size:</b> 150ul , Concentration: 700 ug/ml by Nanodrop;	<b>GeneID (NCBI):</b> 5925	<b>Recommended Dilutions:</b> WB 1:5000-1:50000 IHC 1:200-1:800 IF/ICC 1:200-1:800
<b>Source:</b> Rabbit	<b>UNIPROT ID:</b> P06400	
<b>Isotype:</b> IgG	<b>Full Name:</b> retinoblastoma 1	
	<b>Calculated MW:</b> 928 aa, 106 kDa	
	<b>Observed MW:</b> 110 kDa	

## Applications

<b>Tested Applications:</b> WB, IHC, IF/ICC, ELISA	<b>Positive Controls:</b>
<b>Species Specificity:</b> human	<b>WB :</b> K-562 cells, HT-1080 cells
<b>Note-IHC:</b> suggested antigen retrieval with <b>TE buffer pH 9.0; (*) Alternatively, antigen retrieval may be performed with citrate buffer pH 6.0</b>	<b>IHC :</b> human ovary cancer tissue,
	<b>IF/ICC :</b> HepG2 cells,

## Background Information

The RB1 gene, a member of the pocket family with p107 and p130, was the first known tumor suppressor. RB1 protein is targeted by the transforming proteins of the DNA tumor viruses like adenoviral E1A and is functionally inactivated in most human tumor cells owing to mutations of either the RB1 gene itself or its upstream regulators (PMID: 22787429).

## Storage

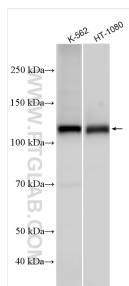
**Storage:**  
Store at -20°C. Stable for one year after shipment.  
**Storage Buffer:**  
PBS with 0.02% sodium azide and 50% glycerol  
Aliquoting is unnecessary for -20°C storage

\*\*\* 20ul sizes contain 0.1% BSA

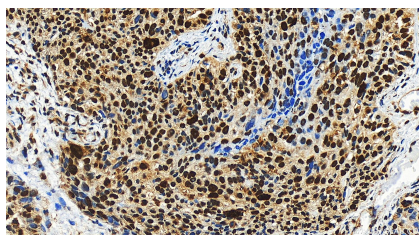
For technical support and original validation data for this product please contact:  
T: 1 (888) 4PTGLAB (1-888-478-4522) (toll free in USA), or 1(312) 455-8498 (outside USA)  
E: [proteintech@ptglab.com](mailto:proteintech@ptglab.com)  
W: [ptglab.com](http://ptglab.com)

This product is exclusively available under Proteintech Group brand and is not available to purchase from any other manufacturer.

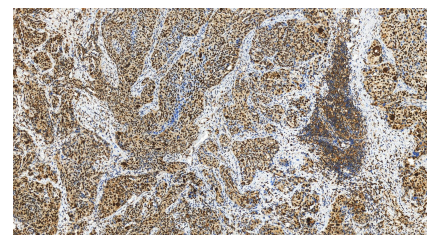
## Selected Validation Data



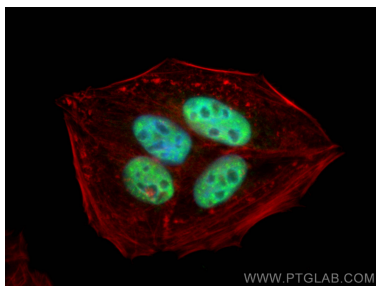
Various lysates were subjected to SDS PAGE followed by western blot with 30373-1-AP (RB1 antibody) at dilution of 1:25000 incubated at room temperature for 1.5 hours.



Immunohistochemical analysis of paraffin-embedded human ovary cancer tissue slide using 30373-1-AP (RB1 antibody) at dilution of 1:400 (under 20x lens). Heat mediated antigen retrieval with Tris-EDTA buffer (pH 9.0).



Immunohistochemical analysis of paraffin-embedded human ovary cancer tissue slide using 30373-1-AP (RB1 antibody) at dilution of 1:400 (under 20x lens). Heat mediated antigen retrieval with Tris-EDTA buffer (pH 9.0).



Immunofluorescent analysis of (4% PFA) fixed HepG2 cells using RB1 antibody (30373-1-AP) at dilution of 1:400 and CoraLite®488-Conjugated AffiniPure Goat Anti-Rabbit IgG(H+L), CL594-Phalloidin (red).