

For Research Use Only

CHI3L1 Polyclonal antibody

Catalog Number: 30419-1-AP



Basic Information

Catalog Number: 30419-1-AP	GenBank Accession Number: BC008568	Purification Method: Antigen affinity purification
Size: 150ul , Concentration: 400 µg/ml by Nanodrop;	GeneID (NCBI): 1116	Recommended Dilutions: WB 1:500-1:3000 IF 1:200-1:800
Source: Rabbit	Full Name: chitinase 3-like 1 (cartilage glycoprotein-39)	
Isotype: IgG	Calculated MW: 383 aa, 43 kDa	
Immunogen Catalog Number: AG33123	Observed MW: 40-43 kDa	

Applications

Tested Applications: IF, WB, ELISA	Positive Controls:
Species Specificity: Human, mouse	WB : HT-29 cells, HepG2 cells IF : mouse brain tissue,

Background Information

Storage

Storage:
Store at -20°C. Stable for one year after shipment.
Storage Buffer:
PBS with 0.02% sodium azide and 50% glycerol pH 7.3.
Aliquoting is unnecessary for -20°C storage

*** 20ul sizes contain 0.1% BSA

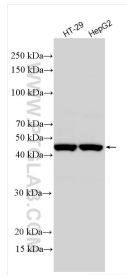
For technical support and original validation data for this product please contact:

T: 1 (888) 4PTGLAB (1-888-478-4522) (toll free in USA), or 1(312) 455-8498 (outside USA)

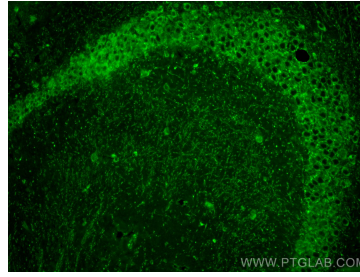
E: proteintech@ptglab.com
W: ptglab.com

This product is exclusively available under Proteintech Group brand and is not available to purchase from any other manufacturer.

Selected Validation Data



Various lysates were subjected to SDS PAGE followed by western blot with 30419-1-AP (CHI3L1 antibody) at dilution of 1:1500 incubated at room temperature for 1.5 hours.



Immunofluorescent analysis of (4% PFA) fixed mouse brain tissue using CHI3L1 antibody (30419-1-AP) at dilution of 1:400 and CoraLite® 488-Conjugated AffiniPure Goat Anti-Rabbit IgG(H+L).