

For Research Use Only

GSDMC Polyclonal antibody

Catalog Number: 30469-1-AP



Basic Information

Catalog Number: 30469-1-AP	GenBank Accession Number: NM_031415	Purification Method: Antigen affinity purification
Size: 150ul , Concentration: 650 ug/ml by Nanodrop;	GeneID (NCBI): 56169	Recommended Dilutions: WB 1:1000-1:6000 IHC 1:300-1:1200
Source: Rabbit	UNIPROT ID: Q9BYG8	
Isotype: IgG	Full Name: gasdermin C	
Immunogen Catalog Number: AG33319	Calculated MW: 58kd	
	Observed MW: 58 kDa	

Applications

Tested Applications: WB, IHC, ELISA	Positive Controls:
Species Specificity: human	WB : MDA-MB-231 cells, HCT 116 cells, A375 cells
Note-IHC: suggested antigen retrieval with TE buffer pH 9.0; (*) Alternatively, antigen retrieval may be performed with citrate buffer pH 6.0	IHC : Human bowens disease,

Background Information

Gasdermin (GSDM) superfamily consists of Gasdermin family genes (GSDMA, GSDMB, GSDMC and GSDMD in humans) and Gasdermin-related genes (DFNA5, DFNB59 in humans). GSDM family members were shown to be detected in the epithelium of various tissue types in a highly tissue-specific manner and suggested to have differentiation-status specific roles. Gasdermin C (GSDMC) was known as melanoma-derived leucine zipper-containing extranuclear factor (MLZE). Several studies have suggested that GSDMC may be involved in the course of tumorigenesis such as acquisition of metastatic potential in melanoma cells or promotion of cell proliferation in colorectal carcinogenesis and that GSDMC may function as an oncogene. (PMID: 29428815)

Storage

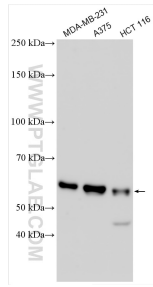
Storage:
Store at -20°C. Stable for one year after shipment.
Storage Buffer:
PBS with 0.02% sodium azide and 50% glycerol pH 7.3.
Aliquoting is unnecessary for -20°C storage

*** 20ul sizes contain 0.1% BSA

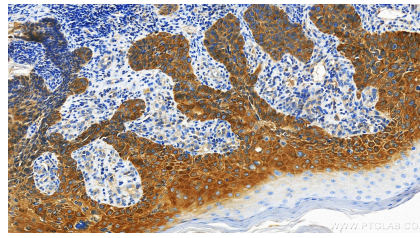
For technical support and original validation data for this product please contact:
T: 1 (888) 4PTGLAB (1-888-478-4522) (toll free in USA), or 1(312) 455-8498 (outside USA)
E: proteintech@ptglab.com
W: ptglab.com

This product is exclusively available under Proteintech Group brand and is not available to purchase from any other manufacturer.

Selected Validation Data



Various lysates were subjected to SDS PAGE followed by western blot with 30469-1-AP (GSDMC antibody) at dilution of 1:3000 incubated at room temperature for 1.5 hours.



Immunohistochemical analysis of paraffin-embedded human brown disease slide using 30469-1-AP (GSDMC antibody) at dilution of 1:600 (under 20x lens). Heat mediated antigen retrieval with Tris-EDTA buffer (pH 9.0).