

For Research Use Only

# ATG12 Polyclonal antibody, PBS Only

Catalog Number: 30505-1-PBS



## Basic Information

**Catalog Number:**

30505-1-PBS

**Size:**

100ug, Concentration: 1 mg/ml by Nanodrop;

**Source:**

Rabbit

**Isotype:**

IgG

**Immunogen Catalog Number:**

AG32268

**GenBank Accession Number:**

BC012266

**GeneID (NCBI):**

9140

**UNIPROT ID:**

O94817

**Full Name:**

ATG12 autophagy related 12 homolog (S. cerevisiae)

**Calculated MW:**

15 kDa

**Observed MW:**

20 kDa, 50-60 kDa

**Purification Method:**

Antigen affinity purification

## Applications

**Tested Applications:**

WB, IHC, IF/ICC, Indirect ELISA

**Species Specificity:**

human, mouse

## Background Information

ATG12, also named as APG12 and APG12L, belongs to the ATG12 family. It is required for autophagy. Free ATG12 is 15kd or 8kd. Conjugated to ATG5, ATG12-ATG5 show 48-55kd.

## Storage

**Storage:**

Store at -80°C.

**Storage Buffer:**

PBS only, pH7.3

For technical support and original validation data for this product please contact:

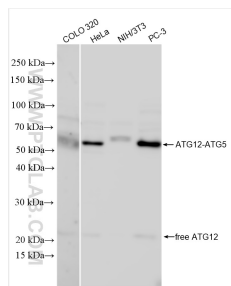
T: 1 (888) 4PTGLAB (1-888-478-4522) (toll free in USA), or 1(312) 455-8498 (outside USA)

E: [proteintech@ptglab.com](mailto:proteintech@ptglab.com)

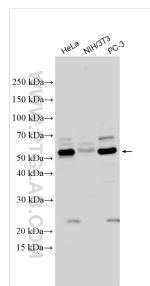
W: [ptglab.com](http://ptglab.com)

This product is exclusively available under Proteintech Group brand and is not available to purchase from any other manufacturer.

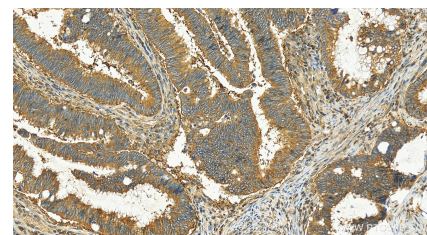
## Selected Validation Data



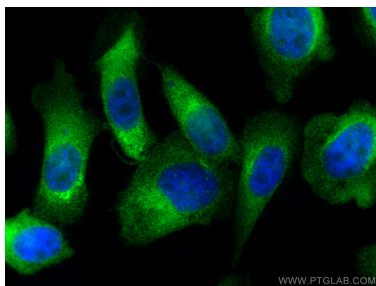
Various lysates were subjected to SDS PAGE followed by western blot with 30505-1-AP (ATG12 antibody) at dilution of 1:2000 incubated at room temperature for 1.5 hours. This data was developed using the same antibody clone with 30505-1-PBS in a different storage buffer formulation.



Various lysates were subjected to SDS PAGE followed by western blot with 30505-1-AP (ATG12 antibody) at dilution of 1:15000 incubated at room temperature for 1.5 hours. This data was developed using the same antibody clone with 30505-1-PBS in a different storage buffer formulation.



Immunohistochemical analysis of paraffin-embedded human colon cancer tissue slide using 30505-1-AP (ATG12 antibody) at dilution of 1:500 (under 20x lens). Heat mediated antigen retrieval with Tris-EDTA buffer (pH 9.0). This data was developed using the same antibody clone with 30505-1-PBS in a different storage buffer formulation.



Immunofluorescent analysis of (4% PFA) fixed PC-3 cells using ATG12 antibody (30505-1-AP) at dilution of 1:200 and CoraLite® 488-Conjugated AffiniPure Goat Anti-Rabbit IgG(H+L). This data was developed using the same antibody clone with 30505-1-PBS in a different storage buffer formulation.