

For Research Use Only

ARHGEF11 Polyclonal antibody, PBS Only

Catalog Number: 30508-1-PBS

Featured Product



Basic Information

Catalog Number:

30508-1-PBS

Size:

100ug, Concentration: 1 mg/ml by Nanodrop;

Source:

Rabbit

Isotype:

IgG

Immunogen Catalog Number:

AG33104

GenBank Accession Number:

GeneID (NCBI):

9826

UNIPROT ID:

O15085

Full Name:

Rho guanine nucleotide exchange factor (GEF) 11

Calculated MW:

168 kDa

Observed MW:

200-220 kDa

Purification Method:

Antigen affinity purification

Applications

Tested Applications:

WB, IHC, Indirect ELISA

Species Specificity:

human, mouse

Background Information

ARHGEF11 (Rho guanine nucleotide exchange factor 11) is a specific guanine nucleotide exchange factor (GEF) for RhoA, which is a critical regulator of actin cytoskeleton dynamics and organization of dendritic spines and inhibitor of spine maintenance (PMID: 28036092). ARHGEF11 has been proven to promote tumor metastasis in glioblastoma and ovarian carcinoma (PMID: 33122451).

Storage

Storage:

Store at -80°C.

Storage Buffer:

PBS only, pH7.3

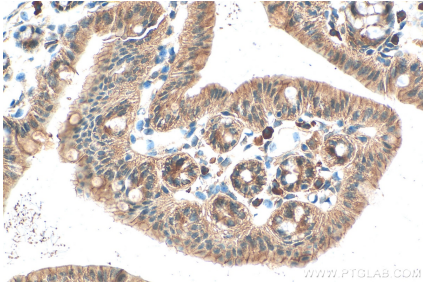
For technical support and original validation data for this product please contact:

T: 1 (888) 4PTGLAB (1-888-478-4522) (toll free in USA), or 1(312) 455-8498 (outside USA)

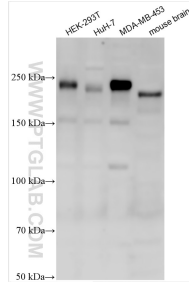
E: proteintech@ptglab.com
W: ptglab.com

This product is exclusively available under Proteintech Group brand and is not available to purchase from any other manufacturer.

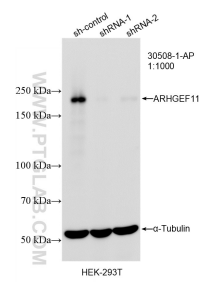
Selected Validation Data



Immunohistochemical analysis of paraffin-embedded mouse colon tissue slide using 30508-1-AP (ARHGEF11 antibody) at dilution of 1:200 (under 40x lens). Heat mediated antigen retrieval with Tris-EDTA buffer (pH 9.0). This data was developed using the same antibody clone with 30508-1-PBS in a different storage buffer formulation.



Various lysates were subjected to SDS PAGE followed by western blot with 30508-1-AP (ARHGEF11 antibody) at dilution of 1:1000 incubated at room temperature for 1.5 hours. This data was developed using the same antibody clone with 30508-1-PBS in a different storage buffer formulation.



WB result of ARHGEF11 antibody (30508-1-AP; 1:1000; incubated at room temperature for 1.5 hours) with sh-Control and sh-ARHGEF11 transfected HEK-293T cells. This data was developed using the same antibody clone with 30508-1-PBS in a different storage buffer formulation.