

For Research Use Only

# SEC23B Polyclonal antibody

Catalog Number:30510-1-AP



## Basic Information

<b>Catalog Number:</b> 30510-1-AP	<b>GenBank Accession Number:</b> BC005404	<b>Purification Method:</b> Antigen affinity purification
<b>Size:</b> 150ul , Concentration: 230 µg/ml by Nanodrop;	<b>GeneID (NCBI):</b> 10483	<b>Recommended Dilutions:</b> WB 1:1000-1:4000 IF 1:200-1:800
<b>Source:</b> Rabbit	<b>Full Name:</b> Sec23 homolog B (S. cerevisiae)	
<b>Isotype:</b> IgG	<b>Calculated MW:</b> 86 kDa	
<b>Immunogen Catalog Number:</b> AG33302	<b>Observed MW:</b> 80-86 kDa	

## Applications

<b>Tested Applications:</b> IF, WB, ELISA	<b>Positive Controls:</b>
<b>Species Specificity:</b> Human, mouse	<b>WB :</b> HeLa cells, K-562 cells, MCF-7 cells, Raji cells <b>IF :</b> RAW 264.7 cells,

## Background Information

### Storage

**Storage:**  
Store at -20°C. Stable for one year after shipment.  
**Storage Buffer:**  
PBS with 0.02% sodium azide and 50% glycerol pH 7.3.  
Aliquoting is unnecessary for -20°C storage

\*\*\* 20ul sizes contain 0.1% BSA

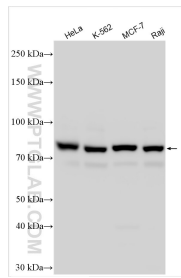
For technical support and original validation data for this product please contact:

T: 1 (888) 4PTGLAB (1-888-478-4522) (toll free in USA), or 1(312) 455-8498 (outside USA)

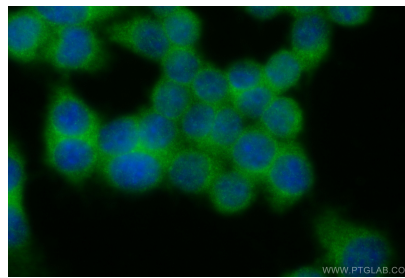
E: [proteintech@ptglab.com](mailto:proteintech@ptglab.com)  
W: [ptglab.com](http://ptglab.com)

This product is exclusively available under Proteintech Group brand and is not available to purchase from any other manufacturer.

## Selected Validation Data



Various lysates were subjected to SDS PAGE followed by western blot with 30510-1-AP (SEC23B antibody) at dilution of 1:2000 incubated at room temperature for 1.5 hours.



Immunofluorescent analysis of (-20°C Ethanol) fixed RAW 264.7 cells using SEC23B antibody (30510-1-AP) at dilution of 1:400 and CoraLite® 488-Conjugated AffiniPure Goat Anti-Rabbit IgG(H+L).