

For Research Use Only

# BANF1 Polyclonal antibody, PBS Only

Catalog Number:30525-1-PBS



## Basic Information

Catalog Number:

30525-1-PBS

Size:

100ug, Concentration: 1 mg/ml by Nanodrop;

Source:

Rabbit

Isotype:

IgG

Immunogen Catalog Number:

AG32042

GenBank Accession Number:

BC005942

GeneID (NCBI):

8815

UNIPROT ID:

O75531

Full Name:

barrier to autointegration factor 1

Calculated MW:

10 kDa

Observed MW:

14 kDa

Purification Method:

Antigen affinity purification

## Applications

Tested Applications:

WB, IF/ICC, Indirect ELISA

Species Specificity:

human, mouse

## Storage

Storage:

Store at -80°C.

Storage Buffer:

PBS Only

For technical support and original validation data for this product please contact:

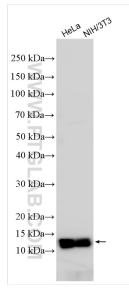
T: 1 (888) 4PTGLAB (1-888-478-4522) (toll free in USA), or 1(312) 455-8498 (outside USA)

E: [proteintech@ptglab.com](mailto:proteintech@ptglab.com)

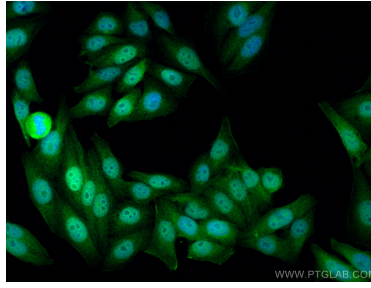
W: [ptglab.com](http://ptglab.com)

This product is exclusively available under Proteintech Group brand and is not available to purchase from any other manufacturer.

## Selected Validation Data



HeLa cells were subjected to SDS PAGE followed by western blot with 30525-1-AP (BANF 1 antibody) at dilution of 1:1000 incubated at room temperature for 1.5 hours. This data was developed using the same antibody clone with 30525-1-PBS in a different storage buffer formulation.



Immunofluorescent analysis of (4% PFA) fixed HepG2 cells using BANF 1 antibody (30525-1-AP) at dilution of 1:200 and CoraLite®488-Conjugated AffiniPure Goat Anti-Rabbit IgG(H+L). This data was developed using the same antibody clone with 30525-1-PBS in a different storage buffer formulation.