

For Research Use Only

C16orf75 Polyclonal antibody

Catalog Number:30529-1-AP



Basic Information

Catalog Number: 30529-1-AP	GenBank Accession Number: BC031016	Purification Method: Antigen affinity purification
Size: 150ul , Concentration: 400 µg/ml by Nanodrop;	GeneID (NCBI): 116028	Recommended Dilutions: WB 1:500-1:1000
Source: Rabbit	Full Name: chromosome 16 open reading frame 75	
Isotype: IgG	Observed MW: 19 kDa	
Immunogen Catalog Number: AG32880		

Applications

Tested Applications: WB, ELISA	Positive Controls: WB : HT-1080 cells, HeLa cells, MCF-7 cells, U-251 cells
Species Specificity: Human	

Background Information

C16orf75 is also named as BLM-associated protein of 18 kDa (BLAP18), RMI2, hRMI2 and RecQ-mediated genome instability protein 2. C16orf75 is essential component of the RMI complex, a complex that plays an important role in the processing of homologous recombination intermediates. It is required to regulate sister chromatid segregation and to limit DNA crossover. And RMI2 is essential for the stability, localization, and function of BLM, TOP3A, and complexes containing BLM. In the RMI complex, it is required to target BLM to chromatin and stress-induced nuclear foci and mitotic phosphorylation of BLM (PMID: 18923082, PMID: 18923083, PMID: 27977684).

Storage

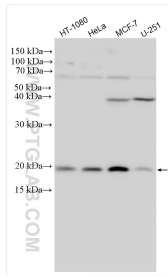
Storage:
Store at -20°C. Stable for one year after shipment.
Storage Buffer:
PBS with 0.02% sodium azide and 50% glycerol pH 7.3.
Aliquoting is unnecessary for -20°C storage

*** 20ul sizes contain 0.1% BSA

For technical support and original validation data for this product please contact:
T: 1 (888) 4PTGLAB (1-888-478-4522) (toll free in USA), or 1(312) 455-8498 (outside USA) E: proteintech@ptglab.com W: ptglab.com

This product is exclusively available under Proteintech Group brand and is not available to purchase from any other manufacturer.

Selected Validation Data



Various lysates were subjected to SDS PAGE followed by western blot with 30529-1-AP (C16orf75 antibody) at dilution of 1:800 incubated at room temperature for 1.5 hours.