

For Research Use Only

ALAS2 Polyclonal antibody

Catalog Number: 30539-1-AP



Basic Information

Catalog Number: 30539-1-AP	GenBank Accession Number: BC030230	Purification Method: Antigen affinity purification
Size: 150ul , Concentration: 650 µg/ml by Nanodrop;	GeneID (NCBI): 212	Recommended Dilutions: WB 1:500-1:3000
Source: Rabbit	Full Name: aminolevulinate, delta-, synthase 2	
Isotype: IgG	Calculated MW: 587 aa, 65 kDa	
Immunogen Catalog Number: AG30308	Observed MW: 65 kDa	

Applications

Tested Applications: WB, ELISA	Positive Controls: WB : K-562 cells, NIH/3T3 cells, mouse brain tissue, mouse heart tissue
Species Specificity: Human, Mouse	

Background Information

The heme biosynthetic pathway begins from delta aminolevulinic acid synthase (ALAS) catalyzing the condensation of glycine and succinyl-CoA to delta aminolevulinic acid (ALA) in the mitochondria. ALAS is coded by two genes: ALAS1 and ALAS2. ALAS1 is ubiquitously expressed in all cells, and the negative feedback is regulated by the heme pool; however, ALAS2 is specifically expressed only in erythroid cells.

Storage

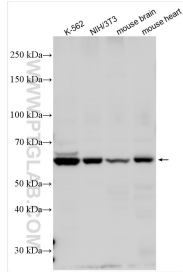
Storage:
Store at -20°C. Stable for one year after shipment.
Storage Buffer:
PBS with 0.02% sodium azide and 50% glycerol pH 7.3.
Aliquoting is unnecessary for -20°C storage

*** 20ul sizes contain 0.1% BSA

For technical support and original validation data for this product please contact:
T: 1 (888) 4PTGLAB (1-888-478-4522) (toll free in USA), or 1(312) 455-8498 (outside USA) E: proteintech@ptglab.com
W: ptglab.com

This product is exclusively available under Proteintech Group brand and is not available to purchase from any other manufacturer.

Selected Validation Data



Various lysates were subjected to SDS PAGE followed by western blot with 30539-1-AP (ALAS2 antibody) at dilution of 1:1500 incubated at room temperature for 1.5 hours.