

For Research Use Only

# ALAS2 Polyclonal antibody, PBS Only

Catalog Number: 30539-1-PBS



## Basic Information

**Catalog Number:**

30539-1-PBS

**Size:**

100ug, Concentration: 1 mg/ml by Nanodrop;

**Source:**

Rabbit

**Isotype:**

IgG

**Immunogen Catalog Number:**

AG30308

**GenBank Accession Number:**

BC030230

**GeneID (NCBI):**

212

**UNIPROT ID:**

P22557

**Full Name:**

aminolevulinate, delta-, synthase 2

**Calculated MW:**

587 aa, 65 kDa

**Observed MW:**

65 kDa

**Purification Method:**

Antigen affinity purification

## Applications

**Tested Applications:**

WB, IF/ICC, Indirect ELISA

**Species Specificity:**

human, mouse

## Background Information

The heme biosynthetic pathway begins from delta aminolevulinic acid synthase (ALAS) catalyzing the condensation of glycine and succinyl-CoA to delta aminolevulinic acid (ALA) in the mitochondria. ALAS is coded by two genes: ALAS1 and ALAS2. ALAS1 is ubiquitously expressed in all cells, and the negative feedback is regulated by the heme pool; however, ALAS2 is specifically expressed only in erythroid cells.

## Storage

**Storage:**

Store at -80°C.

**Storage Buffer:**

PBS Only

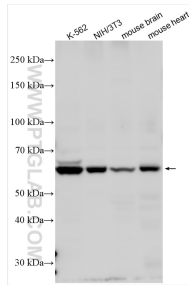
For technical support and original validation data for this product please contact:

T: 1 (888) 4PTGLAB (1-888-478-4522) (toll free in USA), or 1(312) 455-8498 (outside USA)

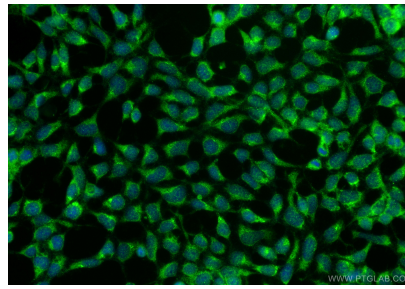
E: [proteintech@ptglab.com](mailto:proteintech@ptglab.com)  
W: [ptglab.com](http://ptglab.com)

**This product is exclusively available under Proteintech Group brand and is not available to purchase from any other manufacturer.**

## Selected Validation Data



Various lysates were subjected to SDS PAGE followed by western blot with 30539-1-AP (ALAS2 antibody) at dilution of 1:1500 incubated at room temperature for 1.5 hours. This data was developed using the same antibody clone with 30539-1-PBS in a different storage buffer formulation.



Immunofluorescent analysis of (-20°C Ethanol) fixed HEK-293 cells using ALAS2 antibody (30539-1-AP) at dilution of 1:200 and CoraLite® 488-Conjugated Goat Anti-Rabbit IgG(H+L) (SA00013-2). This data was developed using the same antibody clone with 30539-1-PBS in a different storage buffer formulation.