

For Research Use Only

NOTCH3 Polyclonal antibody

Catalog Number: 30540-1-AP



Basic Information

Catalog Number:

30540-1-AP

Size:

150ul , Concentration: 650 ug/ml by Nanodrop;

Source:

Rabbit

Isotype:

IgG

Immunogen Catalog Number:

AG30242

GenBank Accession Number:

NM_000435

GeneID (NCBI):

4854

UNIPROT ID:

Q9UM47

Full Name:

Notch homolog 3 (Drosophila)

Calculated MW:

244 kDa

Observed MW:

270 kDa, 90 kDa

Purification Method:

Antigen affinity purification

Recommended Dilutions:

WB 1:500-1:2000

IP 0.5-4.0 ug for 1.0-3.0 mg of total protein lysate

Applications

Tested Applications:

WB, IP, ELISA

Species Specificity:

Human, mouse

Positive Controls:

WB : Caco-2 cells, HeLa cells, U2OS cells, mouse lung tissue

IP : HeLa cells,

Background Information

NOTCH3 (Neurogenic locus notch homolog protein 3) is one of four mammalian Notch proteins, which act as signalling receptors to control cell fate in many developmental and adult tissue contexts (PMID: 32210034). Notch is a transmembrane, developmental signalling receptor, which plays many crucial roles in developmental patterning, cell fate decisions, regulation of cell survival and proliferation (PMID:30246579). Genetic studies have shown that Notch3 gene knockouts are viable and have limited developmental defects, focussed mostly on defects in the arterial smooth muscle cell lineage. Notch3, in collaboration with other Notch proteins, is involved in stem cell regulation in different tissues in stem cell regulation in different tissues, and it also controls the plasticity of the vascular smooth muscle phenotype involved in arterial vessel remodelling. Overexpression, gene amplification and mis-activation of Notch3 are associated with different cancers, in particular triple negative breast cancer and ovarian cancer (PMID: 32210034).

Storage

Storage:

Store at -20°C. Stable for one year after shipment.

Storage Buffer:

PBS with 0.02% sodium azide and 50% glycerol pH 7.3.

Aliquoting is unnecessary for -20°C storage

*** 20ul sizes contain 0.1% BSA

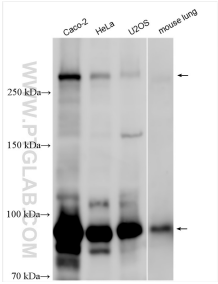
For technical support and original validation data for this product please contact:

T: 1 (888) 4PTGLAB (1-888-478-4522) (toll free in USA), or 1(312) 455-8498 (outside USA)

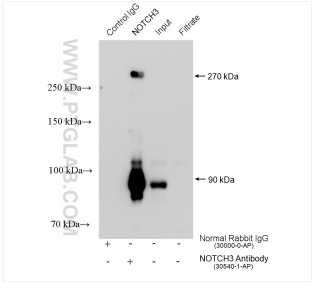
E: proteintech@ptglab.com
W: ptglab.com

This product is exclusively available under Proteintech Group brand and is not available to purchase from any other manufacturer.

Selected Validation Data



Various lysates were subjected to SDS PAGE followed by western blot with 30540-1-AP (NOTCH3 antibody) at dilution of 1:1000 incubated at room temperature for 1.5 hours.



IP result of anti-NOTCH3 (IP:30540-1-AP, 4ug; Detection:30540-1-AP 1:1000) with HeLa cells lysate 1320 ug.