

For Research Use Only

MTA1 Polyclonal antibody

Catalog Number: 30545-1-AP

1 Publications



Basic Information

Catalog Number:

30545-1-AP

Size:

150ul, Concentration: 750 ug/ml by Nanodrop;

Source:

Rabbit

Isotype:

IgG

Immunogen Catalog Number:

AG30994

GenBank Accession Number:

NM_004689

GeneID (NCBI):

9112

UNIPROT ID:

Q13330

Full Name:

metastasis associated 1

Calculated MW:

81 kDa

Observed MW:

70-80 kDa

Purification Method:

Antigen affinity purification

Recommended Dilutions:

WB 1:500-1:2000

IHC 1:50-1:500

IF/ICC 1:400-1:1600

Applications

Tested Applications:

WB, IHC, IF/ICC, ELISA

Cited Applications:

WB

Species Specificity:

human, mouse

Cited Species:

human

Note-IHC: suggested antigen retrieval with TE buffer pH 9.0; (*) Alternatively, antigen retrieval may be performed with citrate buffer pH 6.0

Positive Controls:

WB : A549 cells, HeLa cells, NIH/3T3 cells, HEK-293T cells, MCF-7 cells

IHC : human prostate cancer tissue, human skin cancer tissue, rat cerebellum tissue

IF/ICC : MCF-7 cells,

Background Information

Metastasis-associated protein 1 (MTA1) is a member of the MTA family which is involved in regulating DNA-based biological processes (PMID: 25332144). MTA1 is an integral part of nucleosome remodeling histone deacetylase complex (NuRD complex) and regulates nucleosome remodeling and deacetylation by stabilizing the NuRD complex and related proteins (PMID: 12419236). MTA1 expression is associated with tumor malignancy in several cancer.

Notable Publications

Author	Pubmed ID	Journal	Application
Sihang Zhou	39005375	bioRxiv	WB

Storage

Storage:

Store at -20°C. Stable for one year after shipment.

Storage Buffer:

PBS with 0.02% sodium azide and 50% glycerol pH 7.3.

Aliquoting is unnecessary for -20°C storage

*** 20ul sizes contain 0.1% BSA

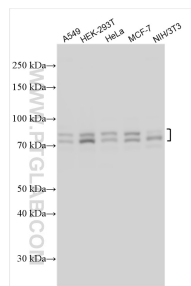
For technical support and original validation data for this product please contact:

T: 1 (888) 4PTGLAB (1-888-478-4522) (toll free in USA), or 1(312) 455-8498 (outside USA)

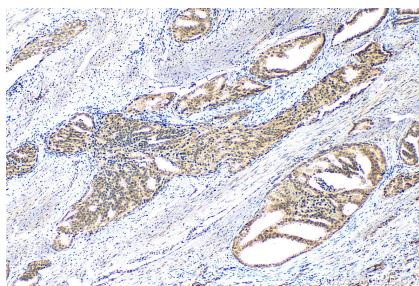
E: proteintech@ptglab.com
W: ptglab.com

This product is exclusively available under Proteintech Group brand and is not available to purchase from any other manufacturer.

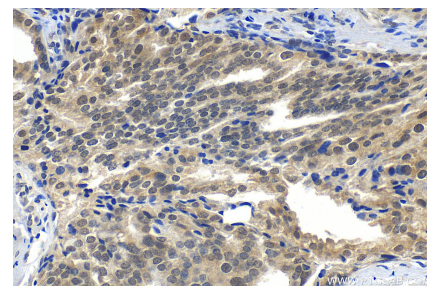
Selected Validation Data



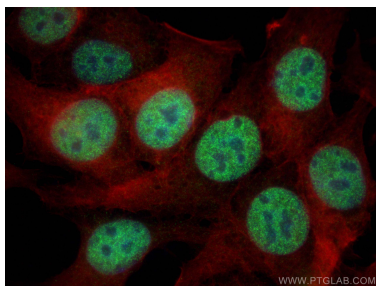
Various lysates were subjected to SDS PAGE followed by western blot with 30545-1-AP (MTA1 antibody) at dilution of 1:1000 incubated at room temperature for 1.5 hours.



Immunohistochemical analysis of paraffin-embedded human prostate cancer tissue slide using 30545-1-AP (MTA1 antibody) at dilution of 1:200 (under 10x lens). Heat mediated antigen retrieval with Tris-EDTA buffer (pH 9.0).



Immunohistochemical analysis of paraffin-embedded human prostate cancer tissue slide using 30545-1-AP (MTA1 antibody) at dilution of 1:200 (under 40x lens). Heat mediated antigen retrieval with Tris-EDTA buffer (pH 9.0).



Immunofluorescent analysis of (4% PFA) fixed MCF-7 cells using MTA1 antibody (30545-1-AP) at dilution of 1:800 and Multi-rAb Coralite® Plus 488-Goat Anti-Rabbit Recombinant Secondary Antibody (H+L) (RGAR002), CL594-phalloidin (red).