

For Research Use Only

SYN1 Polyclonal antibody

Catalog Number: 30549-1-AP



Basic Information

Catalog Number: 30549-1-AP	GenBank Accession Number: NM_006950	Purification Method: Antigen affinity purification
Size: 150ul , Concentration: 750 ug/ml by Nanodrop;	GeneID (NCBI): 6853	Recommended Dilutions: WB 1:5000-1:50000 IHC 1:500-1:2000
Source: Rabbit	UNIPROT ID: P17600	
Isotype: IgG	Full Name: synapsin I	
Immunogen Catalog Number: AG31091	Calculated MW: 74 kDa	
	Observed MW: 70-80 kDa	

Applications

Tested Applications: WB, IHC, ELISA	Positive Controls:
Species Specificity: human, mouse	WB : IMR-32 cells, SH-SY5Y cells, SK-N-SH cells
Note-IHC: suggested antigen retrieval with TE buffer pH 9.0; (*) Alternatively, antigen retrieval may be performed with citrate buffer pH 6.0	IHC : mouse pancreas tissue,

Background Information

SYN1, also named Synapsin I, Brain protein 4.1, belongs to the Synapsin family. SYN1 is a neuronal phosphoprotein that coats synaptic vesicles, binds to the cytoskeleton, and is believed to regulate neurotransmitter release. The complex formed with NOS1 and CAPON proteins is necessary for specific nitric-oxid functions at a presynaptic level. Defects in SYN1 are a cause of epilepsy X-linked with variable learning disabilities and behavior disorders (XELBD). Synapsin I (SYN1) is composed of two isoforms, synapsin Ia and Ib, with molecular weights of 74 kDa and 70 kDa, respectively.

Storage

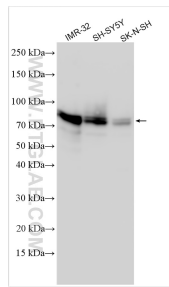
Storage:
Store at -20°C. Stable for one year after shipment.
Storage Buffer:
PBS with 0.02% sodium azide and 50% glycerol pH 7.3.
Aliquoting is unnecessary for -20°C storage

*** 20ul sizes contain 0.1% BSA

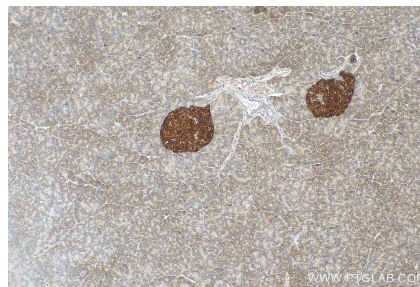
For technical support and original validation data for this product please contact:
T: 1 (888) 4PTGLAB (1-888-478-4522) (toll free in USA), or 1(312) 455-8498 (outside USA)
E: proteintech@ptglab.com
W: ptglab.com

This product is exclusively available under Proteintech Group brand and is not available to purchase from any other manufacturer.

Selected Validation Data



Various lysates were subjected to SDS PAGE followed by western blot with 30549-1-AP (SYN1 antibody) at dilution of 1:10000 incubated at room temperature for 1.5 hours.



Immunohistochemical analysis of paraffin-embedded mouse pancreas tissue slide using 30549-1-AP (SYN1 antibody) at dilution of 1:1000 (under 10x lens). Heat mediated antigen retrieval with Tris-EDTA buffer (pH 9.0).