

For Research Use Only

SLFN12 Polyclonal antibody

Catalog Number:30550-1-AP



Basic Information

Catalog Number: 30550-1-AP	GenBank Accession Number: BC035605	Purification Method: Antigen affinity purification
Size: 150ul , Concentration: 360 ug/ml by Nanodrop;	GeneID (NCBI): 55106	Recommended Dilutions: WB: 1:500-1:2000 IHC: 1:50-1:500
Source: Rabbit	UNIPROT ID: Q8IYM2	
Isotype: IgG	Full Name: schlafen family member 12	
Immunogen Catalog Number: AG31289	Calculated MW: 578 aa, 67 kDa	
	Observed MW: 67-70 kDa	

Applications

Tested Applications:

WB, IHC, ELISA

Species Specificity:

human

Note-IHC: suggested antigen retrieval with TE buffer pH 9.0; (*) Alternatively, antigen retrieval may be performed with citrate buffer pH 6.0

Positive Controls:

WB : DU 145 cells, HEK-293 cells, HeLa cells, U2OS cells

IHC : mouse placenta tissue,

Background Information

Schlafen family member 12 (SLFN12) is the only intermediate Schlafen protein expressed in humans (PMID: 31838790, PMID: 34571887). SLFN12 stimulates differentiation in enterocytes and prostate cancer cells, and its overexpression inhibits prostate cancer, triple-negative breast cancer (TNBC), and lung adenocarcinoma cell proliferation (PMID: 30045019, PMID: 24768141, PMID: 39594803). SLFN12 regulates human enterocytic differentiation by a pathway involving SERPB12, the deubiquitylases, and Cdx2 (PMID: 30045019). The expression of SLFN12 is increased throughout the process of T-cell activation (PMID: 28460425).

Storage

Storage:

Store at -20°C. Stable for one year after shipment.

Storage Buffer:

PBS with 0.02% sodium azide and 50% glycerol, pH7.3

Aliquoting is unnecessary for -20°C storage

*** 20ul sizes contain 0.1% BSA

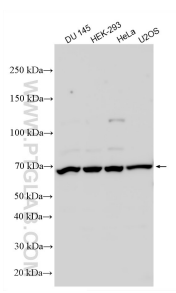
For technical support and original validation data for this product please contact:

T: 1 (888) 4PTGLAB (1-888-478-4522) (toll free in USA), or 1(312) 455-8498 (outside USA)

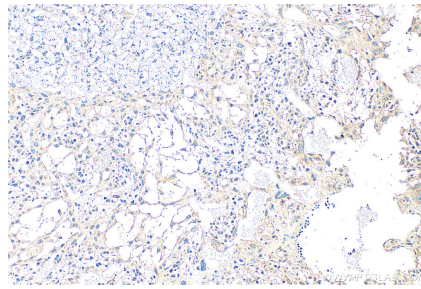
E: proteintech@ptglab.com
W: ptglab.com

This product is exclusively available under Proteintech Group brand and is not available to purchase from any other manufacturer.

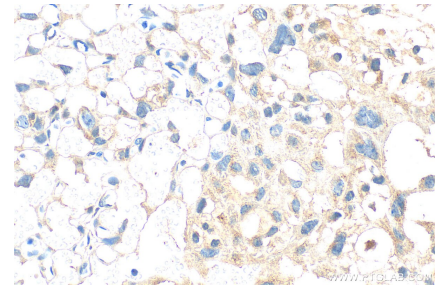
Selected Validation Data



Various lysates were subjected to SDS PAGE followed by western blot with 30550-1-AP (SLFN12 antibody) at dilution of 1:1000 incubated at room temperature for 1.5 hours.



Immunohistochemical analysis of paraffin-embedded mouse placenta tissue slide using 30550-1-AP (SLFN12 antibody) at dilution of 1:200 (under 10x lens). Heat mediated antigen retrieval with Tris-EDTA buffer (pH 9.0).



Immunohistochemical analysis of paraffin-embedded mouse placenta tissue slide using 30550-1-AP (SLFN12 antibody) at dilution of 1:200 (under 40x lens). Heat mediated antigen retrieval with Tris-EDTA buffer (pH 9.0).