

For Research Use Only

SLFN12 Polyclonal antibody, PBS Only

Catalog Number:30550-1-PBS



Basic Information

Catalog Number:

30550-1-PBS

Size:

100ug , Concentration: 1 mg/ml by Nanodrop;

Source:

Rabbit

Isotype:

IgG

Immunogen Catalog Number:

AG31289

GenBank Accession Number:

BC035605

GeneID (NCBI):

55106

UNIPROT ID:

Q8IYM2

Full Name:

schlafen family member 12

Calculated MW:

578 aa, 67 kDa

Observed MW:

67-70 kDa

Purification Method:

Antigen affinity purification

Applications

Tested Applications:

WB, IHC, Indirect ELISA

Species Specificity:

human

Background Information

Schlafen family member 12 (SLFN12) is the only intermediate Schlafen protein expressed in humans (PMID: 31838790, PMID: 34571887). SLFN12 stimulates differentiation in enterocytes and prostate cancer cells, and its overexpression inhibits prostate cancer, triple-negative breast cancer (TNBC), and lung adenocarcinoma cell proliferation (PMID: 30045019, PMID: 24768141, PMID: 39594803). SLFN12 regulates human enterocytic differentiation by a pathway involving SERPB12, the deubiquitylases, and Cdx2 (PMID: 30045019). The expression of SLFN12 is increased throughout the process of T-cell activation (PMID: 28460425).

Storage

Storage:

Store at -80°C.

Storage Buffer:

PBS only, pH7.3

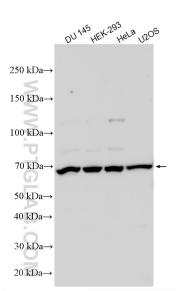
For technical support and original validation data for this product please contact:

T: 1 (888) 4PTGLAB (1-888-478-4522) (toll free in USA), or 1(312) 455-8498 (outside USA)

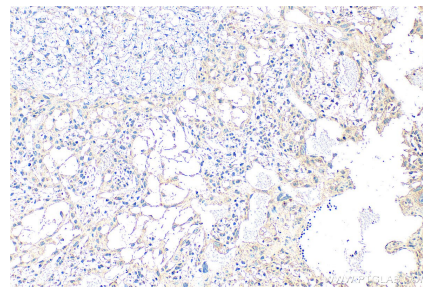
E: proteintech@ptglab.com
W: ptglab.com

This product is exclusively available under Proteintech Group brand and is not available to purchase from any other manufacturer.

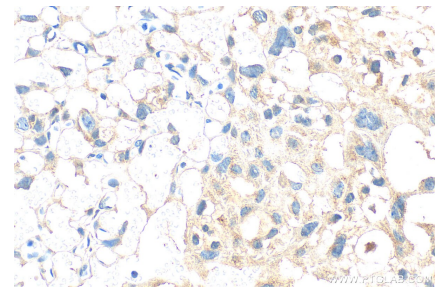
Selected Validation Data



Various lysates were subjected to SDS PAGE followed by western blot with 30550-1-AP (SLFN12 antibody) at dilution of 1:1000 incubated at room temperature for 1.5 hours. This data was developed using the same antibody clone with 30550-1-PBS in a different storage buffer formulation.



Immunohistochemical analysis of paraffin-embedded mouse placenta tissue slide using 30550-1-AP (SLFN12 antibody) at dilution of 1:200 (under 10x lens). Heat mediated antigen retrieval with Tris-EDTA buffer (pH 9.0). This data was developed using the same antibody clone with 30550-1-PBS in a different storage buffer formulation.



Immunohistochemical analysis of paraffin-embedded mouse placenta tissue slide using 30550-1-AP (SLFN12 antibody) at dilution of 1:200 (under 40x lens). Heat mediated antigen retrieval with Tris-EDTA buffer (pH 9.0). This data was developed using the same antibody clone with 30550-1-PBS in a different storage buffer formulation.