

For Research Use Only

PGLS Polyclonal antibody

Catalog Number: 30560-1-AP



Basic Information

Catalog Number: 30560-1-AP	GenBank Accession Number: BC014006	Purification Method: Antigen affinity purification
Size: 150ul , Concentration: 450 µg/ml by Nanodrop;	GeneID (NCBI): 25796	Recommended Dilutions: WB 1:1000-1:6000
Source: Rabbit	Full Name: 6-phosphogluconolactonase	
Isotype: IgG	Observed MW: 28 kDa	
Immunogen Catalog Number: AG30836		

Applications

Tested Applications: WB, ELISA	Positive Controls: WB : HeLa cells, THP-1 cells
Species Specificity: Human	

Background Information

6-phosphogluconolactonase (PGLS), the key enzyme of pentose phosphate pathway, was aberrantly highly expressed in various cancers, including cervical cancer, breast cancer, glioblastomas, and hepatic cancer, etc.

Storage

Storage:
Store at -20°C. Stable for one year after shipment.
Storage Buffer:
PBS with 0.02% sodium azide and 50% glycerol pH 7.3.
Aliquoting is unnecessary for -20°C storage

*** 20ul sizes contain 0.1% BSA

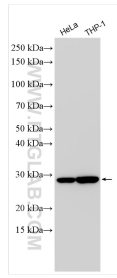
For technical support and original validation data for this product please contact:

T: 1 (888) 4PTGLAB (1-888-478-4522) (toll free in USA), or 1(312) 455-8498 (outside USA)

E: proteintech@ptglab.com
W: ptglab.com

This product is exclusively available under Proteintech Group brand and is not available to purchase from any other manufacturer.

Selected Validation Data



Various lysates were subjected to SDS PAGE followed by western blot with 30560-1-AP (PGLS antibody) at dilution of 1:3000 incubated at room temperature for 1.5 hours.